

## Anti-RPS6KA4 antibody (673-772) (STJ112169)

STJ112169

### GENERAL INFORMATION

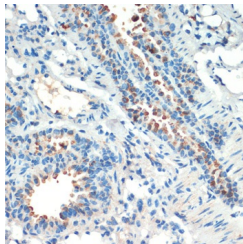
<b>Product Type</b>	Primary antibodies
<b>Short Description</b>	
<b>Applications</b>	WB/IHC-P/ELISA
<b>Host/Source</b>	Rabbit
<b>Reactivity</b>	Human/Mouse

### PRODUCT PROPERTIES

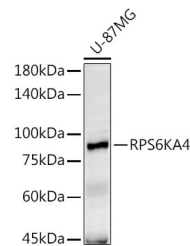
<b>Clonality</b>	Polyclonal
<b>Clone ID</b>	
<b>Concentration</b>	Lot specific
<b>Conjugation</b>	Unconjugated
<b>Purification</b>	Affinity purification
<b>Dilution Range</b>	WB:1:500-1:1000 IHC-P:1:20-1:100 ELISA:Recommended starting concentration is 1 µg/mL. Please optimize the concentration based on your specific assay requirements.
<b>Formulation</b>	PBS with 0.05% Proclin300, 50% Glycerol, pH 7.3.
<b>Isotype</b>	IgG
<b>Storage</b>	Store at -20°C for up to 1 year from the date of receipt, and avoid repeat freeze-thaw cycles.
<b>Instruction</b>	

### TARGET INFORMATION

<b>Gene ID</b>	8986
<b>Gene Symbol</b>	RPS6KA4
<b>Uniprot ID</b>	KS6A4_HUMAN
<b>Immunogen</b>	
<b>Immunogen Region</b>	673-772
<b>Specificity</b>	A synthetic peptide corresponding to a sequence within amino acids 673-772 of human RPS6KA4 (NP_003933.1).
<b>Immunogen Sequence</b>	WLQDGSARSSPLRTPDVLE SSGPAVRSGNLNATFMFNRG KREGFFLKSVENAPLAKRRK QKLRSATASRRGSPAPANPG RAPVASKGAPRRANGPLPPS



Immunohistochemistry analysis of paraffin-embedded mouse lung using RPS6KA4 antibody (STJ112169) at dilution of 1:200 (40x lens). Perform microwave antigen retrieval with 10 mM PBS buffer pH 7.2 before commencing with immunohistochemistry staining protocol.



Western blot analysis of extracts of U-87MG cells, using RPS6KA4 antibody (STJ112169) at 1:1000 dilution. Secondary antibody: HRP Goat Anti-Rabbit IgG (H+L) (STJS000856) at 1:10000 dilution. Lysates/proteins: 25 µg per lane. Blocking buffer: 3% nonfat dry milk in TBS-T. Detection: ECL Basic Kit. Exposure time: 180s.

This product is suitable for in-vitro studies under the RESEARCH USE ONLY [RUO] licence. This product must not be used as for diagnostic or other medical purposes.  
St John's Laboratory Ltd, Knowledge Dock Business Centre, University Way, London, E16 2RD | Tel: 0208 223 3081