

Anti-AP1M1 antibody (1-160) (STJ112168)

STJ112168

GENERAL INFORMATION

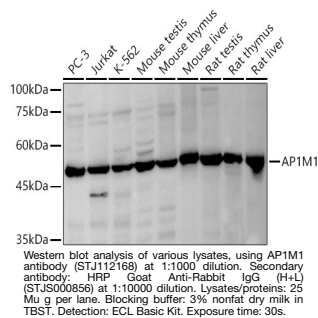
Product Type	Primary antibodies
Short Description	
Applications	WB/ELISA
Host/Source	Rabbit
Reactivity	Human/Mouse/Rat

PRODUCT PROPERTIES

Clonality	Polyclonal
Clone ID	
Concentration	Lot specific
Conjugation	Unconjugated
Purification	Affinity purification
Dilution	WB:1:500-1:1000
Range	ELISA:Recommended starting concentration is 1 µg/mL. Please optimize the concentration based on your specific assay requirements.
Formulation	PBS with 0.02% Sodium Azide, 50% Glycerol, pH 7.3.
Isotype	IgG
Storage	Store at -20°C for up to 1 year from the date of receipt, and avoid repeat freeze-thaw cycles.
Instruction	

TARGET INFORMATION

Gene ID	8907
Gene Symbol	AP1M1
Uniprot ID	AP1M1_HUMAN
Immunogen	
Immunogen Region	1-160
Specificity	Recombinant fusion protein containing a sequence corresponding to amino acids 1-160 of human AP1M1 (NP_115882.1).
Immunogen Sequence	MSASAVYVLDLKGKVLICRN YRGDVMSEVEHFMPILMEK EEGMLSPILAHGGVRFMWI KHNNLYLVATSKKNACVSLV FSFLYKVVQVFSEYFKELEE ESIRDNFVIIYELLDLMDF GYPQTTDSKILQEYITQEGH KLETGAPRPPATVTNAVSWR



This product is suitable for in-vitro studies under the RESEARCH USE ONLY [RUO] licence. This product must not be used as for diagnostic or other medical purposes.
St John's Laboratory Ltd, Knowledge Dock Business Centre, University Way, London, E16 2RD | Tel: 0208 223 3081