

## Anti-TRPC5 antibody (800-900) (STJ112129)

STJ112129

### GENERAL INFORMATION

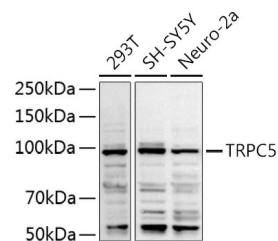
<b>Product Type</b>	Primary antibodies
<b>Short Description</b>	
<b>Applications</b>	WB/IF/ICC/ELISA
<b>Host/Source</b>	Rabbit
<b>Reactivity</b>	Human/Mouse

### PRODUCT PROPERTIES

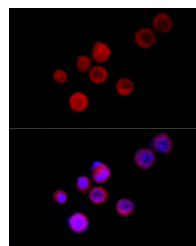
<b>Clonality</b>	Polyclonal
<b>Clone ID</b>	
<b>Concentration</b>	Lot specific
<b>Conjugation</b>	Unconjugated
<b>Purification</b>	Affinity purification
<b>Dilution Range</b>	WB:1:500-1:1000 IF/ICC:1:50-1:200 ELISA:Recommended starting concentration is 1 Mu g/mL. Please optimize the concentration based on your specific assay requirements.
<b>Formulation</b>	PBS with 0.05% Proclin300, 50% Glycerol, pH 7.3.
<b>Isotype</b>	IgG
<b>Storage</b>	Store at -20°C for up to 1 year from the date of receipt, and avoid repeat freeze-thaw cycles.
<b>Instruction</b>	

### TARGET INFORMATION

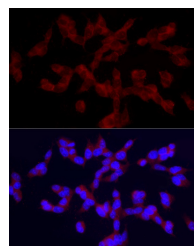
<b>Gene ID</b>	7224
<b>Gene Symbol</b>	TRPC5
<b>Uniprot ID</b>	TRPC5_HUMAN
<b>Immunogen</b>	
<b>Immunogen Region</b>	800-900
<b>Specificity</b>	A synthetic peptide corresponding to a sequence within amino acids 800-900 of human TRPC5 (NP_036603.1).
<b>Immunogen Sequence</b>	NLGCKKKKTCHGPPLIRTMPR SSGAQGKSKAESSSKRSFMG PSLKKLLGLFSKFNGHMSEP SSEPMYTISDGIVQQHCMWQ DIRYSQMEKGKAEACSQSEI N



Western blot analysis of extracts of various cell lines, using TRPC5 antibody (STJ112129) at 1:1000 dilution. Secondary antibody: HRP Goat Anti-rabbit IgG (H+L) (STJ5000856) at 1:10000 dilution. Lysates/proteins: 25 Mu g per lane. Blocking buffer: 3% non-fat dry milk in TBST. Detection: ECL Basic Kit. Exposure time: 90s.



Immunofluorescence analysis of Neuro-2a cells using TRPC5 rabbit polyclonal antibody (STJ112129) at dilution of 1:100 (40x lens). Blue: DAPI for nuclear staining.



Immunofluorescence analysis of SH-SY5Y cells using TRPC5 rabbit polyclonal antibody (STJ112129) at dilution of 1:100 (40x lens). Blue: DAPI for nuclear staining.