

Anti-KIR3DL3 antibody (26-322) (STJ112104)
STJ112104

GENERAL INFORMATION

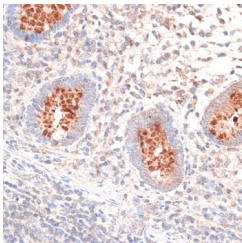
Product Type	Primary antibodies
Short Description	
Applications	WB/IHC-P/ELISA
Host/Source	Rabbit
Reactivity	Human/Mouse/Rat

PRODUCT PROPERTIES

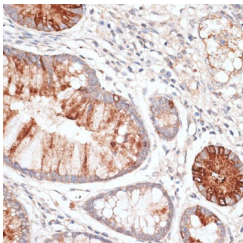
Clonality	Polyclonal
Clone ID	
Concentration	Lot specific
Conjugation	Unconjugated
Purification	Affinity purification
Dilution	WB:1:500-1:2000
Range	IHC-P:1:50-1:200 ELISA:Recommended starting concentration is 1 μ g/mL. Please optimize the concentration based on your specific assay requirements.
Formulation	PBS with 0.02% Sodium Azide, 50% Glycerol, pH 7.3.
Isotype	IgG
Storage Instruction	Store at -20°C for up to 1 year from the date of receipt, and avoid repeat freeze-thaw cycles.

TARGET INFORMATION

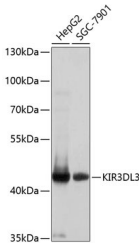
Gene ID	
Gene Symbol	KIR3DL3
Uniprot ID	KI3L3_HUMAN
Immunogen	
Immunogen Region	26-322
Specificity	Recombinant fusion protein containing a sequence corresponding to amino acids 26-322 of human KIR3DL3 (NP_703144.3).
Immunogen Sequence	QDKPFLSAWPGTVVSEGHV TLQCRSRLGFNEFSLSKEDG MPVPELYNRIFRNSFLMGPV TPAHAGTYRCCSSHPHSPTG WSAPSNPVVIMVTGVHRKPS LLAHPGPLVKSGETVILQCW SDVRFERFLLHREGITEDPL RLVGQLHDAGSQVNYSMGPM TPALAGTYRCFSGVTHLPYE LSAPSDPLDIVWGLYGKPS LSAQPGTQVQAGENVTLSCS SRSFLDIYHLSREAEGEL



Immunohistochemistry analysis of paraffin-embedded human appendix using KIR3DL3 antibody (STJ112104) at dilution of 1:100 (40x lens). Perform microwave antigen retrieval with 10 mM PBS buffer pH 7.2 before commencing with immunohistochemistry staining protocol.



Immunohistochemistry analysis of paraffin-embedded human colon carcinoma using KIR3DL3 antibody (STJ112104) at dilution of 1:100 (40x lens). Perform microwave antigen retrieval with 10 mM PBS buffer pH 7.2 before commencing with immunohistochemistry staining protocol.



Western blot analysis of extracts of various cell lines, using KIR3DL3 antibody (STJ112104) at 1:1000 dilution. Secondary antibody: HRP Goat Anti-Rabbit IgG (H+L) (STJ500856) at 1:10000 dilution. Lysates/proteins: 25 μ g per lane. Blocking buffer: 3% nonfat dry milk in TBST. Detection: ECL Basic Kit. Exposure time: 15s.

This product is suitable for in-vitro studies under the RESEARCH USE ONLY [RUO] licence. This product must not be used as for diagnostic or other medical purposes.
St John's Laboratory Ltd, Knowledge Dock Business Centre, University Way, London, E16 2RD | Tel: 0208 223 3081