

Anti-DSC1 antibody (480-690) (STJ112101)

STJ112101

GENERAL INFORMATION

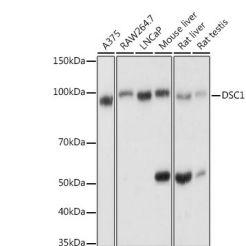
Product Type	Primary antibodies
Short Description	
Applications	WB/ELISA
Host/Source	Rabbit
Reactivity	Human/Mouse/Rat

PRODUCT PROPERTIES

Clonality	Polyclonal
Clone ID	
Concentration	Lot specific
Conjugation	Unconjugated
Purification	Affinity purification
Dilution	WB:1:500-1:1000
Range	ELISA:Recommended starting concentration is 1 Mu g/mL. Please optimize the concentration based on your specific assay requirements.
Formulation	PBS with 0.02% Sodium Azide, 50% Glycerol, pH 7.3.
Isotype	IgG
Storage	Store at -20°C for up to 1 year from the date of receipt, and avoid repeat freeze-thaw cycles.
Instruction	

TARGET INFORMATION

Gene ID	1823
Gene Symbol	DSC1
Uniprot ID	DSC1_HUMAN
Immunogen	
Immunogen Region	480-690
Specificity	Recombinant fusion protein containing a sequence corresponding to amino acids 480-690 of human DSC1 (NP_077739.1).
Immunogen Sequence	SQDGFPAQQLGYKALDPE ISSGEGLRYQKLGDEDNWFE INQHTGDLRTLKVLDRESKF VKNNQYNISVVAVDVAVGRSC TGTLVVHLDDYNDHAPQIDK EVTICQNNEDFAVLKPVDPD GPENGPPFQFFLDNSASKNW NIEEKDGKTAILRQRQNLDY NYYSVPIQIKDRHGLVATHM LTVRVCDCTPSECRMKDKS TRDVRPNVILG



Western blot analysis of extracts of various cell lines, using DSC1 antibody (STJ112101) at 1:1000 dilution. Secondary antibody: HRP Goat Anti-Rabbit IgG (H+L) (STJS000856) at 1:10000 dilution. Lysates/proteins: 25 Mu g per lane. Blocking buffer: 3% nonfat dry milk in TBST. Detection: ECL Basic Kit. Exposure time: 1s.

This product is suitable for in-vitro studies under the RESEARCH USE ONLY [RUO] licence. This product must not be used as for diagnostic or other medical purposes.
St John's Laboratory Ltd, Knowledge Dock Business Centre, University Way, London, E16 2RD | Tel: 0208 223 3081