

Anti-CR1 antibody (420-550) (STJ112099)

STJ112099

GENERAL INFORMATION

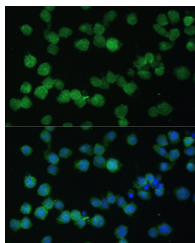
Product Type	Primary antibodies
Short Description	
Applications	WB/IF/ICC/ELISA
Host/Source	Rabbit
Reactivity	Human

PRODUCT PROPERTIES

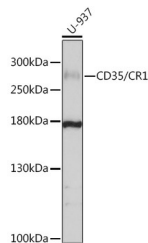
Clonality	Polyclonal
Clone ID	
Concentration	Lot specific
Conjugation	Unconjugated
Purification	Affinity purification
Dilution Range	WB:1:500-1:2000 IF/ICC:1:50-1:200 ELISA:Recommended starting concentration is 1 Mu g/mL. Please optimize the concentration based on your specific assay requirements.
Formulation	PBS with 0.02% Sodium Azide, 50% Glycerol, pH 7.3.
Isotype	IgG
Storage Instruction	Store at -20°C for up to 1 year from the date of receipt, and avoid repeat freeze-thaw cycles.

TARGET INFORMATION

Gene ID	1378
Gene Symbol	CR1
Uniprot ID	CR1_HUMAN
Immunogen	
Immunogen Region	420-550
Specificity	Recombinant fusion protein containing a sequence corresponding to amino acids 420-550 of human CD35/CD35/CR1 (NP_000642.3).
Immunogen Sequence	FCPSPPVIPNGRHTGKPLEV FPFGKTVNYTCDPHPDRGTS FDLIGESTIRCTSDPQGNV WSSPAPRCGILGHCAQPDHF LFAKLKTQTNASDFPIGTSL KYECRPEYYGRPFISITCLDN LVWSSPKDVCK



Immunofluorescence analysis of THP-1 cells using CD35/CD35/CR1 antibody (STJ112099) at dilution of 1:100. Blue: DAPI for nuclear staining.



Western blot analysis of extracts of U-937 cells, using CD35/CD35/CR1 antibody (STJ112099) at 1:1000 dilution. Secondary antibody: HRP Goat Anti-Rabbit IgG (H+L) (STJ5000856) at 1:10000 dilution. Lysates/proteins: 25 Mu g per lane. Blocking buffer: 3% nonfat dry milk in TBST. Detection: ECL Basic Kit. Exposure time: 60s.

This product is suitable for in-vitro studies under the RESEARCH USE ONLY [RUO] licence. This product must not be used as for diagnostic or other medical purposes.

St John's Laboratory Ltd, Knowledge Dock Business Centre, University Way, London, E16 2RD | Tel: 0208 223 3081