

Anti-RBP1 antibody (1-135) (STJ112069)

STJ112069

GENERAL INFORMATION

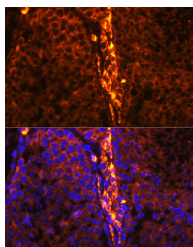
Product Type	Primary antibodies
Short Description	
Applications	WB/IF/ICC/ELISA
Host/Source	Rabbit
Reactivity	Human/Mouse/Rat

PRODUCT PROPERTIES

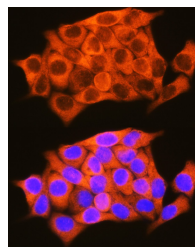
Clonality	Polyclonal
Clone ID	
Concentration	Lot specific
Conjugation	Unconjugated
Purification	Affinity purification
Dilution Range	WB:1:500-1:1000 IF/ICC:1:50-1:200
Formulation	ELISA:Recommended starting concentration is 1 μ g/mL. Please optimize the concentration based on your specific assay requirements.
Isotype	PBS with 0.09% Sodium Azide, 50% Glycerol, pH 7.3.
Storage Instruction	IgG Store at -20°C for up to 1 year from the date of receipt, and avoid repeat freeze-thaw cycles.

TARGET INFORMATION

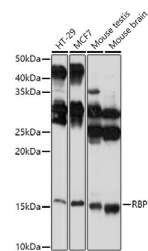
Gene ID	5947
Gene Symbol	RBP1
Uniprot ID	RET1_HUMAN
Immunogen Region	1-135
Specificity	Recombinant fusion protein containing a sequence corresponding to amino acids 1-135 of human RBP1 (NP_001352869.1).
Immunogen Sequence	MDPPAGFVRAGNPAVAAPQS PLSPEGAHFRAAHHPRTGS RCPGSLQPSRPLVANWLQSL PEMPVDFTGYWKMLVNENFE EYLRALDVNVALRKIANLLK PDKEIVQDGDHMIIRLTSTF RNYIMDFQVGKEFEE



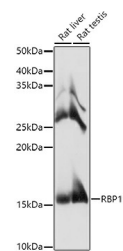
Immunofluorescence analysis of mouse testis using RBP1 Rabbit polyclonal antibody (STJ112069) at dilution of 1:100 (40x lens). Blue: DAPI for nuclear staining.



Immunofluorescence analysis of HeLa cells using RBP1 Rabbit polyclonal antibody (STJ112069) at dilution of 1:100 (40x lens). Blue: DAPI for nuclear staining.



Western blot analysis of extracts of various cell lines, using RBP1 antibody (STJ112069) at 1:1000 dilution. Secondary antibody: HRP Goat Anti-Rabbit IgG (H+L) (STJS000856) at 1:10000 dilution. Lysates/proteins: 25 μ g per lane. Blocking buffer: 3% nonfat dry milk in TBST. Detection: ECL Basic Kit. Exposure time: 30s.



Western blot analysis of extracts of various cell lines, using RBP1 antibody (STJ112069) at 1:1000 dilution. Secondary antibody: HRP Goat Anti-Rabbit IgG (H+L) (STJS000856) at 1:10000 dilution. Lysates/proteins: 25 μ g per lane. Blocking buffer: 3% nonfat dry milk in TBST. Detection: ECL Basic Kit. Exposure time: 3s.

This product is suitable for in-vitro studies under the RESEARCH USE ONLY [RUO] licence. This product must not be used as for diagnostic or other medical purposes.
St John's Laboratory Ltd, Knowledge Dock Business Centre, University Way, London, E16 2RD | Tel: 0208 223 3081