

Anti-CYP3A7 antibody (244-503) (STJ112066)

STJ112066

GENERAL INFORMATION

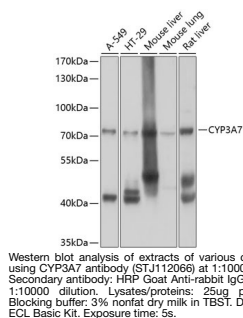
Product Type	Primary antibodies
Short Description	
Applications	WB/ELISA
Host/Source	Rabbit
Reactivity	Human/Mouse/Rat

PRODUCT PROPERTIES

Clonality	Polyclonal
Clone ID	
Concentration	Lot specific
Conjugation	Unconjugated
Purification	Affinity purification
Dilution	WB:1:500-1:2000
Range	ELISA:Recommended starting concentration is 1 µg/mL. Please optimize the concentration based on your specific assay requirements.
Formulation	PBS with 0.02% Sodium Azide, 50% Glycerol, pH 7.3.
Isotype	IgG
Storage	Store at -20°C for up to 1 year from the date of receipt, and avoid repeat freeze-thaw cycles.
Instruction	

TARGET INFORMATION

Gene ID	100861540/1551
Gene Symbol	CYP3A7
Uniprot ID	CP3A7_HUMAN
Immunogen	
Immunogen Region	244-503
Specificity	Recombinant fusion protein containing a sequence corresponding to amino acids 244-503 of human CYP3A7 (NP_000756.3). KVISFLTKSVKQIKEGRLKE TQKHRVDFLQLMDSQNSKD SETHKALSDLELMAQSIIFI FAGYETTSSVLSFIIYELAT HPDVQKQVQKEIDTVLPNKA PPTYDTVLQLEYLDMVNET LRLFVAMRLERVCKKDVEI NGMFIPKGVWMIPSYVLHH DPKYWTEPEKFLPERFSKKN KDNIDPYIYTPFGSGPRNCI GMRFALVNMKLALVRVLQNF SFKPCKETQIPLKLRFGGL
Immunogen Sequence	



This product is suitable for in-vitro studies under the RESEARCH USE ONLY [RUO] licence. This product must not be used as for diagnostic or other medical purposes.
St John's Laboratory Ltd, Knowledge Dock Business Centre, University Way, London, E16 2RD | Tel: 0208 223 3081