

Anti-FRMD6 antibody (82-183) (STJ112036)

STJ112036

GENERAL INFORMATION

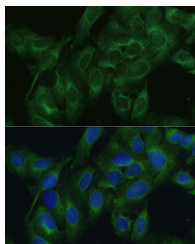
| | |
|--------------------------|-----------------------|
| Product Type | Primary antibodies |
| Short Description | |
| Applications | WB/IHC-P/IF/ICC/ELISA |
| Host/Source | Rabbit |
| Reactivity | Human/Mouse/Rat |

PRODUCT PROPERTIES

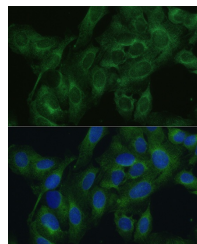
| | |
|-----------------------|--|
| Clonality | Polyclonal |
| Clone ID | |
| Concentration | Lot specific |
| Conjugation | Unconjugated |
| Purification | Affinity purification |
| Dilution Range | WB:1:1000-1:4000 IHC-P:1:50-1:200 IF/ICC:1:50-1:200 ELISA:Recommended starting concentration is 1 µg/mL. Please optimize the concentration based on your specific assay requirements. |
| Formulation | PBS with 0.09% Sodium Azide, 50% Glycerol, pH 7.3. |
| Isotype | IgG |
| Storage | Store at -20°C for up to 1 year from the date of receipt, and avoid repeat freeze-thaw cycles. |
| Instruction | |

TARGET INFORMATION

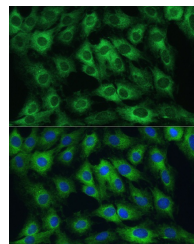
| | |
|---------------------------|--|
| Gene ID | 122786 |
| Gene Symbol | FRMD6 |
| Uniprot ID | FRMD6_HUMAN |
| Immunogen | |
| Immunogen Region | 82-183 |
| Specificity | A synthetic peptide corresponding to a sequence within amino acids 82-183 of human FRMD6 (NP_001253975.1). |
| Immunogen Sequence | KEWKKEASKVRQYEVTWGID QFGPPMIHFRVQYYVENGRLISDRAARYYYYWHLRKQVL HSQCVLREEAYFLAALQ ADLGNFKRNKHYGKYFEPA YF |



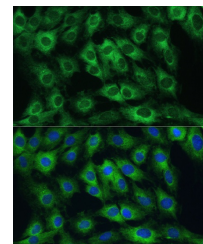
Western blot analysis of extracts of various cell lines, using FRMD6 antibody (STJ112036) at 1:1000 dilution. Secondary antibody: HRP Goat Anti-rabbit IgG (H+L) at 1:10000 dilution. Lysates/proteins: 25µg per lane. Blocking buffer: 3% non-fat dry milk in TBST. Detection: ECL Basic Kit. Exposure time: 5s.



Immunofluorescence analysis of U2OS cells using FRMD6 antibody (STJ112036) at dilution of 1:100. Blue: DAPI for nuclear staining.



Western blot analysis of extracts of various cell lines, using FRMD6 antibody (STJ112036) at 1:1000 dilution. Secondary antibody: HRP Goat Anti-rabbit IgG (H+L) at 1:10000 dilution. Lysates/proteins: 25µg per lane. Blocking buffer: 3% non-fat dry milk in TBST. Detection: ECL Basic Kit. Exposure time: 1s.



Immunofluorescence analysis of C6 cells using FRMD6 antibody (STJ112036) at dilution of 1:100. Blue: DAPI for nuclear staining.

This product is suitable for in-vitro studies under the RESEARCH USE ONLY [RUO] licence. This product must not be used as for diagnostic or other medical purposes.
St John's Laboratory Ltd, Knowledge Dock Business Centre, University Way, London, E16 2RD | Tel: 0208 223 3081