

Anti-RPP25 antibody (1-199) (STJ112014)

STJ112014

GENERAL INFORMATION

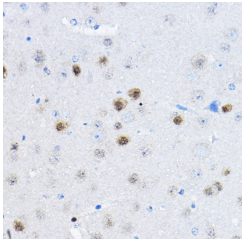
Product Type	Primary antibodies
Short Description	
Applications	WB/IHC-P/ELISA
Host/Source	Rabbit
Reactivity	Human/Mouse

PRODUCT PROPERTIES

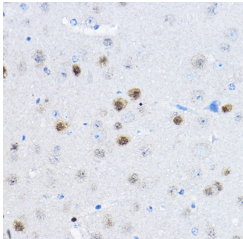
Clonality	Polyclonal
Clone ID	
Concentration	Lot specific
Conjugation	Unconjugated
Purification	Affinity purification
Dilution	WB:1:500-1:2000
Range	IHC-P:1:50-1:200 ELISA:Recommended starting concentration is 1 µg/mL. Please optimize the concentration based on your specific assay requirements.
Formulation	PBS with 0.02% Sodium Azide, 50% Glycerol, pH 7.3.
Isotype	IgG
Storage Instruction	Store at -20°C for up to 1 year from the date of receipt, and avoid repeat freeze-thaw cycles.

TARGET INFORMATION

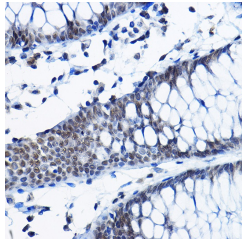
Gene ID	54913
Gene Symbol	RPP25
Uniprot ID	RPP25_HUMAN
Immunogen	
Immunogen Region	1-199
Specificity	Recombinant fusion protein containing a sequence corresponding to amino acids 1-199 of human RPP25 (NP_060263.2).
Immunogen Sequence	MENFRKVRSEEAPAGCGAEG GPGSGPFADLAPGAVHMRV KEGSKIRNLMAFATASMAQP ATRAVFSGCGRATTKVTVC AEILKRRLAGLHQVTRLRYR SVREVWQSLPPGPTQGQTPG EPAASLSVLKNVPLAILLS KDALDPRQPGYQPPNPHPGP SSPPAAPASKRSLGEPAAAGE GSAKRSQPEPGVADEDDQTA



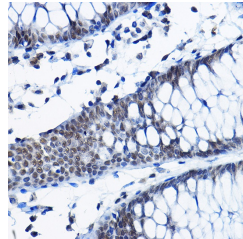
Western blot analysis of extracts of various cell lines, using RPP25 antibody (STJ112014) at 1:1000 dilution. Secondary antibody: HRP Goat Anti-rabbit IgG (H+L) at 1:10000 dilution. Lysates/proteins: 25µg per lane. Blocking buffer: 3% non-fat dry milk in TBST. Detection: ECL Enhanced Kit. Exposure time: 90s.



Immunohistochemistry analysis of paraffin-embedded mouse brain using RPP25 Rabbit polyclonal antibody (STJ112014) at dilution of 1:100 (40x lens). Perform high pressure antigen retrieval with 10 mM citrate buffer pH 6.0 before commencing with immunohistochemistry staining protocol.



Immunohistochemistry of paraffin-embedded human colon using RPP25 rabbit polyclonal antibody (STJ112014) at dilution of 1:100 (40x lens).



Immunohistochemistry analysis of paraffin-embedded human colon using RPP25 Rabbit polyclonal antibody (STJ112014) at dilution of 1:100 (40x lens). Perform high pressure antigen retrieval with 10 mM citrate buffer pH 6.0 before commencing with immunohistochemistry staining protocol.

This product is suitable for in-vitro studies under the RESEARCH USE ONLY [RUO] licence. This product must not be used as for diagnostic or other medical purposes.
St John's Laboratory Ltd, Knowledge Dock Business Centre, University Way, London, E16 2RD | Tel: 0208 223 3081