

Anti-SUPV3L1 antibody (577-786) (STJ111992)
STJ111992

GENERAL INFORMATION

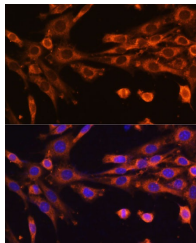
Product Type	Primary antibodies
Short Description	
Applications	WB/IF/ICC/ELISA
Host/Source	Rabbit
Reactivity	Human/Mouse/Rat

PRODUCT PROPERTIES

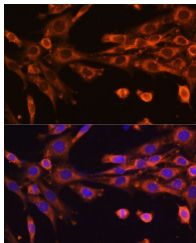
Clonality	Polyclonal
Clone ID	
Concentration	Lot specific
Conjugation	Unconjugated
Purification	Affinity purification
Dilution	WB:1:1000-1:4000
Range	IF/CC:1:50-1:200
	ELISA:Recommended starting concentration is 1 Mu g/mL. Please optimize the concentration based on your specific assay requirements.
Formulation	PBS with 0.02% Sodium Azide, 50% Glycerol, pH 7.3.
Isotype	IgG
Storage Instruction	Store at -20°C for up to 1 year from the date of receipt, and avoid repeat freeze-thaw cycles.

TARGET INFORMATION

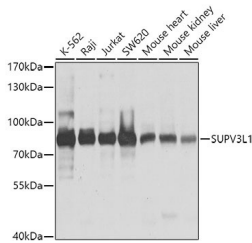
Gene ID	6832
Gene Symbol	SUPV3L1
Uniprot ID	SUV3_HUMAN
Immunogen	
Immunogen Region	577-786
Specificity	Recombinant fusion protein containing a sequence corresponding to amino acids 577-786 of human SUPV3L1 (NP_003162.2).
Immunogen Sequence	APINKKQPFVCSSLLQFARQ YSRNEPLTFAWLRRYIKWPL LPPKNIKDLMDEAVHDVLD LYLWLSYRFMDMFPDASLIR DLQKELDGIIQDGVHNITKL IKMSETHKLLNLEGFPSGSQ SRLSGTLKSQARRTRGTKAL GSKATEPPSPDAGELSLASR LVQQGLLTPDMLKQLEKEWM TQQTENHKEKTESGTHPKGT RRRKKPEPDS



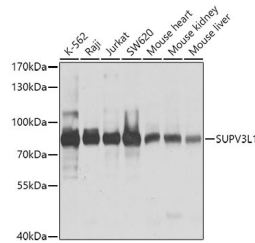
Western blot analysis of extracts of various cell lines, using SUPV3L1 antibody (STJ111992) at 1:1000 dilution. Secondary antibody: HRP Goat Anti-rabbit IgG (H+L) at 1:10000 dilution. Lysates/proteins: 25ug per lane. Blocking buffer: 3% non-fat dry milk in TBST. Detection: ECL Basic Kit. Exposure time: 1s.



Immunofluorescence analysis of NIH-3T3 cells using SUPV3L1 Polyclonal Antibody (STJ111992) at dilution of 1:100 (40x lens). Blue: DAPI for nuclear staining.



Immunofluorescence analysis of NIH-3T3 cells using SUPV3L1 Polyclonal Antibody (STJ111992) at dilution of 1:100 (40x lens). Blue: DAPI for nuclear staining.



Western blot analysis of extracts of various cell lines, using SUPV3L1 antibody (STJ111992) at 1:1000 dilution. Secondary antibody: HRP Goat Anti-Rabbit IgG (H+L) (STJ5000856) at 1:10000 dilution. Lysates/proteins: 25 Mu g per lane. Blocking buffer: 3% nonfat dry milk in TBST. Detection: ECL Basic Kit. Exposure time: 1s.

This product is suitable for in-vitro studies under the RESEARCH USE ONLY [RUO] licence. This product must not be used as for diagnostic or other medical purposes.
St John's Laboratory Ltd, Knowledge Dock Business Centre, University Way, London, E16 2RD | Tel: 0208 223 3081