

Anti-SERPINF2 antibody (302-491) (STJ111986)

STJ111986

GENERAL INFORMATION

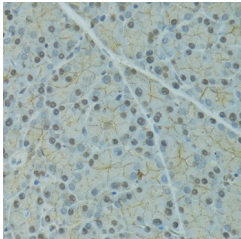
Product Type	Primary antibodies
Short Description	
Applications	WB/IHC-P/ELISA
Host/Source	Rabbit
Reactivity	Mouse/Rat

PRODUCT PROPERTIES

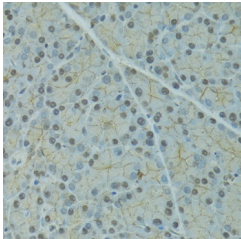
Clonality	Polyclonal
Clone ID	
Concentration	Lot specific
Conjugation	Unconjugated
Purification	Affinity purification
Dilution	WB:1:500-1:1000
Range	IHC-P:1:50-1:100 ELISA:Recommended starting concentration is 1 μ g/mL. Please optimize the concentration based on your specific assay requirements.
Formulation	PBS with 0.02% Sodium Azide, 50% Glycerol, pH 7.3.
Isotype	IgG
Storage Instruction	Store at -20°C for up to 1 year from the date of receipt, and avoid repeat freeze-thaw cycles.

TARGET INFORMATION

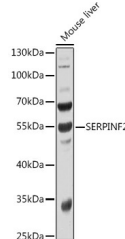
Gene ID	5345
Gene Symbol	SERPINF2
Uniprot ID	A2AP_HUMAN
Immunogen	
Immunogen Region	302-491
Specificity	Recombinant fusion protein containing a sequence corresponding to amino acids 302-491 of human SERPINF2 (NP_001159392.1).
Immunogen Sequence	VPTHFENVSQVLNLSWDT LHPPLVWERPTKVRPLKLYL KHQMDLVATLSQLGLQELFQ APDLRGISEQSLVVSGVQHQ STLELSEVGVEAAAATSIAM SRMSLSFSVNRPLFFIFE DTTGLPLFVGSVRNPNSAP RELKEQQDSPGNKDFLQSLK GFPGRGDKLFGPDLKLVPPE EDYPQFGSPK



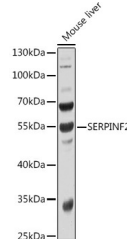
Western blot analysis of extracts of mouse liver, using SERPINF2 antibody (STJ111986) at 1:1000 dilution. Secondary antibody: HRP Goat Anti-rabbit IgG (H+L) at 1:10000 dilution. Lysates/proteins: 25 μ g per lane. Blocking buffer: 3% non-fat dry milk in TBST. Detection: ECL Basic Kit. Exposure time: 30s.



Immunohistochemistry analysis of paraffin-embedded rat pancreas using SERPINF2 antibody (STJ111986) at dilution of 1:100 (40x lens). Perform microwave antigen retrieval with 10 mM PBS buffer pH 7.2 before commencing with immunohistochemistry staining protocol.



Immunohistochemistry of paraffin-embedded rat pancreas using SERPINF2 antibody (STJ111986) at dilution of 1:100 (40x lens).



Western blot analysis of extracts of Mouse liver, using SERPINF2 antibody (STJ111986) at 1:1000 dilution. Secondary antibody: HRP Goat Anti-Rabbit IgG (H+L) (STJS000856) at 1:10000 dilution. Lysates/proteins: 25 μ g per lane. Blocking buffer: 3% nonfat dry milk in TBST. Detection: ECL Basic Kit. Exposure time: 30s.

This product is suitable for in-vitro studies under the RESEARCH USE ONLY [RUO] licence. This product must not be used as for diagnostic or other medical purposes.

St John's Laboratory Ltd, Knowledge Dock Business Centre, University Way, London, E16 2RD | Tel: 0208 223 3081