

# Anti-AQP5 antibody (188-203) (STJ111968)

STJ111968

## GENERAL INFORMATION

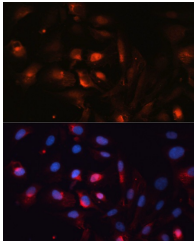
<b>Product Type</b>	Primary antibodies
<b>Short Description</b>	
<b>Applications</b>	WB/IF/ICC/ELISA
<b>Host/Source</b>	Rabbit
<b>Reactivity</b>	Human/Mouse/Rat

## PRODUCT PROPERTIES

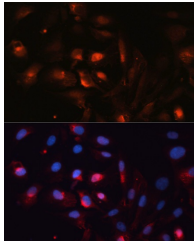
<b>Clonality</b>	Polyclonal
<b>Clone ID</b>	
<b>Concentration</b>	Lot specific
<b>Conjugation</b>	Unconjugated
<b>Purification</b>	Affinity purification
<b>Dilution Range</b>	WB:1:1000-1:5000 IF/ICC:1:50-1:200 ELISA:Recommended starting concentration is 1 $\mu$ g/mL. Please optimize the concentration based on your specific assay requirements.
<b>Formulation</b>	PBS with 0.02% Sodium Azide, 50% Glycerol, pH 7.3.
<b>Isotype</b>	IgG
<b>Storage Instruction</b>	Store at -20°C for up to 1 year from the date of receipt, and avoid repeat freeze-thaw cycles.

## TARGET INFORMATION

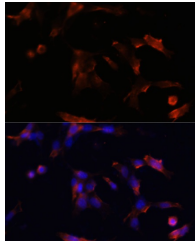
<b>Gene ID</b>	362
<b>Gene Symbol</b>	AQP5
<b>Uniprot ID</b>	AQP5_HUMAN
<b>Immunogen</b>	
<b>Immunogen Region</b>	188-203
<b>Specificity</b>	A synthetic peptide corresponding to a sequence within amino acids 166-265 of human AQP5 (NP_001642.1).
<b>Immunogen Sequence</b>	GLSVTLGHLVGIYFTGCSMN PARSGPAVVMNRFSPAHWV FWVGPIVGAVLAAILYFYLL FPNLSLSLSEVAIIKGTYP DEDWEEQREERKKTMLTTR



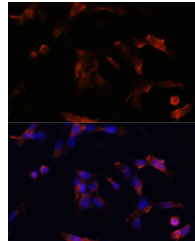
Western blot analysis of extracts of various cell lines, using AQP5 antibody (STJ111968) at 1:1000 dilution. Secondary antibody: HRP Goat Anti-rabbit IgG (H+L) at 1:10000 dilution. Lysates/proteins: 25ug per lane. Blocking buffer: 3% non-fat dry milk in TBST. Detection: ECL Basic Kit. Exposure time: 90s.



Immunofluorescence analysis of U2OS cells using AQP5 Rabbit polyclonal antibody (STJ111968) at dilution of 1:100. Secondary antibody: Cy3 Goat Anti-Rabbit IgG (H+L) at 1:500 dilution. Blue: DAPI for nuclear staining.



Immunofluorescence analysis of NIH/3T3 cells using AQP5 antibody (STJ111968) at dilution of 1:100. Blue: DAPI for nuclear staining.



Immunofluorescence analysis of NIH/3T3 cells using AQP5 Rabbit polyclonal antibody (STJ111968) at dilution of 1:100. Secondary antibody: Cy3 Goat Anti-Rabbit IgG (H+L) at 1:500 dilution. Blue: DAPI for nuclear staining.

This product is suitable for in-vitro studies under the RESEARCH USE ONLY [RUO] licence. This product must not be used as for diagnostic or other medical purposes.  
St John's Laboratory Ltd, Knowledge Dock Business Centre, University Way, London, E16 2RD | Tel: 0208 223 3081