

Anti-ASXL1 antibody (70-250) (STJ111932)

STJ111932

GENERAL INFORMATION

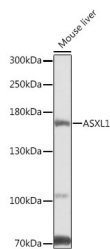
Product Type	Primary antibodies
Short Description	
Applications	WB/ELISA
Host/Source	Rabbit
Reactivity	Human/Mouse

PRODUCT PROPERTIES

Clonality	Polyclonal
Clone ID	
Concentration	Lot specific
Conjugation	Unconjugated
Purification	Affinity purification
Dilution	WB:1:500-1:2000
Range	ELISA:Recommended starting concentration is 1 Mu g/mL. Please optimize the concentration based on your specific assay requirements.
Formulation	PBS with 0.02% Sodium Azide, 50% Glycerol, pH 7.3.
Isotype	IgG
Storage	Store at -20°C for up to 1 year from the date of receipt, and avoid repeat freeze-thaw cycles.
Instruction	

TARGET INFORMATION

Gene ID	171023
Gene Symbol	ASXL1
Uniprot ID	ASXL1_HUMAN
Immunogen	
Immunogen Region	70-250
Specificity	Recombinant fusion protein containing a sequence corresponding to amino acids 70-250 of human ASXL1 (NP_056153.2).
Immunogen Sequence	LFYKLPGRISLFTLKDALQ WSRHPATVEGEEPEDTADVE SCGSNEASTVSGENDVSLDE TSSNASCSTESQSRPLSNPR DSYRASSQANKQKKKTGVML PRWLTPLKVNGAHVESASG FSGCHADGESGSPSSSSSGS LALGSAAIRGQAEVTQDPAP LLRGFRKPATGQMKRNRGEE I



Western blot analysis of extracts of mouse liver, using ASXL1 antibody (STJ111932) at 1:1000 dilution. Secondary antibody: HRP Goat Anti-rabbit IgG (H+L) at 1:10000 dilution. Lysates/proteins: 25ug per lane. Blocking buffer: 3% nonfat dry milk in TBST. Detection: ECL Basic Kit. Exposure time: 5s.

This product is suitable for in-vitro studies under the RESEARCH USE ONLY [RUO] licence. This product must not be used as for diagnostic or other medical purposes.
St John's Laboratory Ltd, Knowledge Dock Business Centre, University Way, London, E16 2RD | Tel: 0208 223 3081