

Anti-MRPS16 antibody (1-137) (STJ111916)
STJ111916

GENERAL INFORMATION

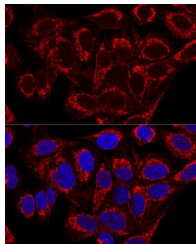
Product Type	Primary antibodies
Short Description	
Applications	WB/IF/ICC/ELISA
Host/Source	Rabbit
Reactivity	Human/Mouse/Rat

PRODUCT PROPERTIES

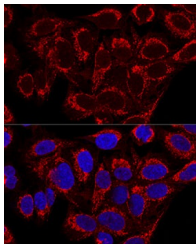
Clonality	Polyclonal
Clone ID	
Concentration	Lot specific
Conjugation	Unconjugated
Purification	Affinity purification
Dilution Range	WB:1:500-1:2000 IF/CC:1:50-1:200 ELISA:Recommended starting concentration is 1 μ g/mL. Please optimize the concentration based on your specific assay requirements.
Formulation	PBS with 0.02% Sodium Azide, 50% Glycerol, pH 7.3.
Isotype	IgG
Storage Instruction	Store at -20°C for up to 1 year from the date of receipt, and avoid repeat freeze-thaw cycles.

TARGET INFORMATION

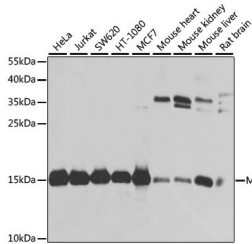
Gene ID	51021
Gene Symbol	MRPS16
Uniprot ID	RT16_HUMAN
Immunogen	
Immunogen Region	1-137
Specificity	Recombinant fusion protein containing a sequence corresponding to amino acids 1-137 of human MRPS16 (NP_057149.1).
Immunogen Sequence	MVHLTLLCKAYRGHLLTIR LALGGCTNRPFYRVAAHNK CPRDGRFVEQLGSYDPLPNS HGEKLVNALDRIRHWIGCG AHLSPMEKLLGLAGFFPLH PMMITNAERLRKRAREVLL ASQKTDAEATDTEATET



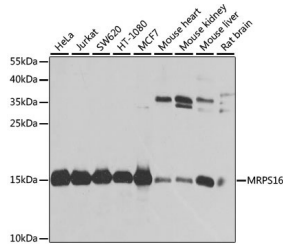
Western blot analysis of extracts of various cell lines, using MRPS16 antibody (STJ111916) at 1:1000 dilution. Secondary antibody: HRP Goat Anti-rabbit IgG (H+L) at 1:10000 dilution. Lysates/proteins: 25 μ g per lane. Blocking buffer: 3% non-fat dry milk in TBST. Detection: ECL Basic Kit. Exposure time: 10s.



Confocal immunofluorescence analysis of U2OS cells using MRPS16 Polyclonal Antibody (STJ111916) at dilution of 1:100. Blue: DAPI for nuclear staining.



Confocal immunofluorescence analysis of U2OS cells using MRPS16 Polyclonal Antibody (STJ111916) at dilution of 1:100. Blue: DAPI for nuclear staining.



Western blot analysis of extracts of various cell lines, using MRPS16 antibody (STJ111916) at 1:1000 dilution. Secondary antibody: HRP Goat Anti-Rabbit IgG (H+L) (STJS000856) at 1:10000 dilution. Lysates/proteins: 25 μ g per lane. Blocking buffer: 3% nonfat dry milk in TBST. Detection: ECL Basic Kit. Exposure time: 10s.