

Anti-CAPN10 antibody (1-230) (STJ111907)
STJ111907

GENERAL INFORMATION

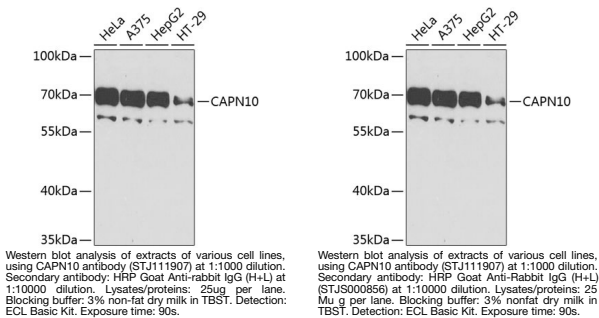
Product Type	Primary antibodies
Short Description	
Applications	WB/ELISA
Host/Source	Rabbit
Reactivity	Human

PRODUCT PROPERTIES

Clonality	Polyclonal
Clone ID	
Concentration	Lot specific
Conjugation	Unconjugated
Purification	Affinity purification
Dilution	WB:1:1000-1:4000
Range	ELISA:Recommended starting concentration is 1 Mu g/mL. Please optimize the concentration based on your specific assay requirements.
Formulation	PBS with 0.02% Sodium Azide, 50% Glycerol, pH 7.3.
Isotype	IgG
Storage	Store at -20°C for up to 1 year from the date of receipt, and avoid repeat freeze-thaw cycles.
Instruction	

TARGET INFORMATION

Gene ID	11132
Gene Symbol	CAPN10
Uniprot ID	CAN10_HUMAN
Immunogen	
Immunogen Region	1-230
Specificity	Recombinant fusion protein containing a sequence corresponding to amino acids 1-230 of human CAPN10 (NP_075571.1).
Immunogen Sequence	MRAGRGATPARELFRDAAFP AADSSLFCDLSTPLAQFRED ITWRRPQEICATPRLFPDDP REGQVKQGLLGDCWFLCACA ALQKSRHLLDQVIPPQQPSW ADQEYRGSFTCRIWQFGRWV EVTTDDRLPCLAGRLCFSRC QREDVFWLPLEKVYAKVHG SYEHLWAGQVADALVLTGG LAERWNLKGVAGSGGQDRP GRWEHRTCRQLHLKDQCLI SCCVLSPRAG



This product is suitable for in-vitro studies under the RESEARCH USE ONLY [RUO] licence. This product must not be used as for diagnostic or other medical purposes.
St John's Laboratory Ltd, Knowledge Dock Business Centre, University Way, London, E16 2RD | Tel: 0208 223 3081