

Anti-BAZ1B antibody (1-260) (STJ111893)

STJ111893

GENERAL INFORMATION

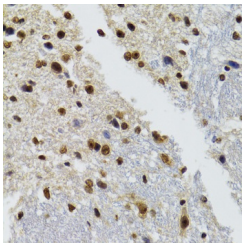
Product Type	Primary antibodies
Short Description	
Applications	WB/IHC-P/ELISA
Host/Source	Rabbit
Reactivity	Human/Mouse/Rat

PRODUCT PROPERTIES

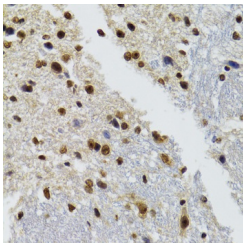
Clonality	Polyclonal
Clone ID	
Concentration	Lot specific
Conjugation	Unconjugated
Purification	Affinity purification
Dilution Range	WB: 1:500-1:2000 IHC-P: 1:50-1:200 ELISA: Recommended starting concentration is 1 µg/mL. Please optimize the concentration based on your specific assay requirements.
Formulation	PBS with 0.02% Sodium Azide, 50% Glycerol, pH 7.3.
Isotype	IgG
Storage Instruction	Store at -20°C for up to 1 year from the date of receipt, and avoid repeat freeze-thaw cycles.

TARGET INFORMATION

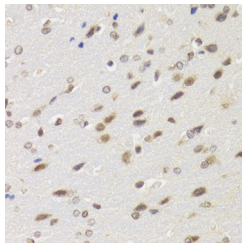
Gene ID	9031
Gene Symbol	BAZ1B
Uniprot ID	BAZ1B_HUMAN
Immunogen	
Immunogen Region	1-260
Specificity	Recombinant fusion protein containing a sequence corresponding to amino acids 1-260 of human WSTF (NP_115784.1).
Immunogen Sequence	MAPLLGRKPFPLVKPLPGEE PLFTIPHTQEAFTREEYEA RLERYSERIWTCKSTGSSQL THKEAWEEEEEVAELLKEEF PAWYEKLVLEMVHNTASLE KLVDTAWLEIMTKYAVGEEC DFEVGKEKMLKVIVKIHPL EKVDEEATEKKSDGACDSPS SDKENSSQIAQDHQKKETVV KEDEGRRESINDRARRSPRK LPTSLKKGERKWAPPKFLPH KYDVKLQNEDKIISNPAD



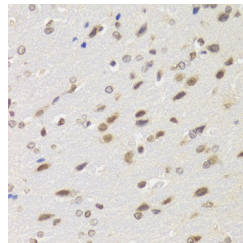
Western blot analysis of extracts of various cell lines, using WSTF antibody (STJ111893) at 1:1000 dilution. Secondary antibody: HRP Goat Anti-rabbit IgG (H+L) at 1:10000 dilution. Lysates/proteins: 25µg per lane. Blocking buffer: 3% non-fat dry milk in TBST. Detection: ECL Basic Kit. Exposure time: 3s.



Immunohistochemistry analysis of paraffin-embedded mouse brain using WSTF antibody (STJ111893) at dilution of 1:100 (40x lens). Perform microwave antigen retrieval with 10 mM PBS buffer pH 7.2 before commencing with immunohistochemistry staining protocol.



Western blot analysis of extracts from normal (control) and WSTF knockout (KO) HeLa cells, using WSTF antibody (STJ111893) at 1:500 dilution. Secondary antibody: HRP Goat Anti-rabbit IgG (H+L) at 1:10000 dilution. Lysates/proteins: 25µg per lane. Blocking buffer: 3% non-fat dry milk in TBST. Detection: ECL Basic Kit. Exposure time: 1s.



Immunohistochemistry analysis of paraffin-embedded rat brain using WSTF antibody (STJ111893) at dilution of 1:100 (40x lens). Perform microwave antigen retrieval with 10 mM PBS buffer pH 7.2 before commencing with immunohistochemistry staining protocol.

This product is suitable for in-vitro studies under the RESEARCH USE ONLY [RUO] licence. This product must not be used as for diagnostic or other medical purposes.

St John's Laboratory Ltd, Knowledge Dock Business Centre, University Way, London, E16 2RD | Tel: 0208 223 3081