

Anti-ABCC3 antibody (830-950) (STJ111891)

STJ111891

GENERAL INFORMATION

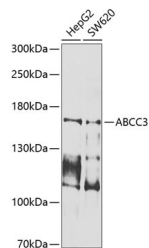
Product Type	Primary antibodies
Short Description	
Applications	WB/ELISA
Host/Source	Rabbit
Reactivity	Human

PRODUCT PROPERTIES

Clonality	Polyclonal
Clone ID	
Concentration	Lot specific
Conjugation	Unconjugated
Purification	Affinity purification
Dilution Range	WB:1:500-1:2000 ELISA:Recommended starting concentration is 1 µg/mL. Please optimize the concentration based on your specific assay requirements.
Formulation	PBS with 0.02% Sodium Azide, 50% Glycerol, pH 7.3.
Isotype	IgG
Storage	Store at -20°C for up to 1 year from the date of receipt, and avoid repeat freeze-thaw cycles.
Instruction	

TARGET INFORMATION

Gene ID	8714
Gene Symbol	ABCC3
Uniprot ID	MRP3_HUMAN
Immunogen	
Immunogen Region	830-950
Specificity	Recombinant fusion protein containing a sequence corresponding to amino acids 830-950 of human ABCC3 (NP_003777.2).
Immunogen Sequence	SEMGYPYPALLQRNGSFANFL CNYAPDEDQGHLEDSWTALE GAEDKEALLIEDTLNHTDL TDNDPVTYVVQKQFMRQLSA LSSDGEGQGRPVPRRLGPS EKVQVTEAKADGALTQEEKA A



Western blot analysis of extracts of various cell lines, using ABCC3 antibody (STJ111891) at 1:1000 dilution. Secondary antibody: HRP Goat Anti-rabbit IgG (H+L) at 1:10000 dilution. Lysates/proteins: 25µg per lane. Blocking buffer: 3% nonfat dry milk in TBST. Detection: ECL Basic Kit. Exposure time: 1s.