

Anti-TFR2 antibody (130-330) (STJ111887)

STJ111887

GENERAL INFORMATION

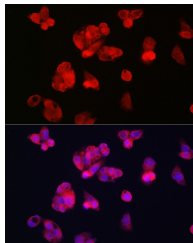
Product Type	Primary antibodies
Short Description	
Applications	WB/IHC-P/IF/ICC/ELISA
Host/Source	Rabbit
Reactivity	Human/Mouse

PRODUCT PROPERTIES

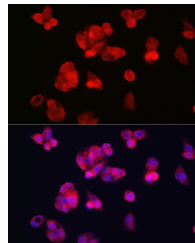
Clonality	Polyclonal
Clone ID	
Concentration	Lot specific
Conjugation	Unconjugated
Purification	Affinity purification
Dilution	WB:1:500-1:1000
Range	IHC-P:1:50-1:200 IF/ICC:1:50-1:200 ELISA:Recommended starting concentration is 1 µg/mL. Please optimize the concentration based on your specific assay requirements.
Formulation	PBS with 0.09% Sodium Azide, 50% Glycerol, pH 7.3.
Isotype	IgG
Storage	Store at -20°C for up to 1 year from the date of receipt, and avoid repeat freeze-thaw cycles.
Instruction	

TARGET INFORMATION

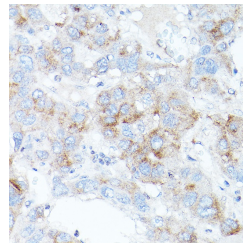
Gene ID	7036
Gene Symbol	TFR2
Uniprot ID	TFR2_HUMAN
Immunogen	
Region	130-330
Specificity	Recombinant fusion protein containing a sequence corresponding to amino acids 130-330 of human TFR2 (NP_003218.2).
Immunogen Sequence	FHQGRLYWSDLQAMFLQFLG EGRLEDITRQTSRERVAGS AGMAALTQDIRAALSQKLD HWWTDTHYVGLQFPDPAHPN TLHWVDEAGKVGELPLEDP DVYCPYSAIGNVTGELVYAH YGRPEDLQDLRARGVDPVGR LLLVRVGVISFAQKVNTNAQD FGAQGVLYPEPADFSQDPP KPSLSSQAVYGHVHLGTGD P



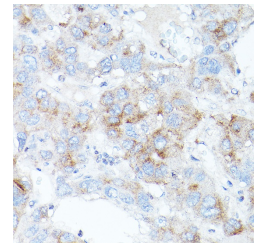
Western blot analysis of extracts of various cell lines, using TFR2 antibody (STJ111887) at 1:1000 dilution. Secondary antibody: HRP Goat Anti-rabbit IgG (H+L) at 1:10000 dilution. Lysates/proteins: 25µg per lane. Blocking buffer: 3% non-fat dry milk in TBST. Detection: ECL Basic Kit. Exposure time: 10s.



Immunofluorescence analysis of HepG2 cells using TFR2 Rabbit polyclonal antibody (STJ111887) at dilution of 1:100 (40x lens). Blue: DAPI for nuclear staining.



Immunohistochemistry of paraffin-embedded human liver cancer using TFR2 antibody (STJ111887) at dilution of 1:100 (40x lens). Perform high pressure antigen retrieval with 10 mM citrate buffer pH 6.0 before commencing with immunohistochemistry staining protocol.



Immunohistochemistry analysis of paraffin-embedded human liver cancer using TFR2 antibody (STJ111887) at dilution of 1:100 (40x lens). Perform high pressure antigen retrieval with 10 mM citrate buffer pH 6.0 before commencing with immunohistochemistry staining protocol.