

Anti-TEP1 antibody (2523-2627) (STJ111886)

STJ111886

GENERAL INFORMATION

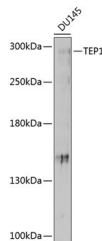
Product Type	Primary antibodies
Short Description	
Applications	WB/ELISA
Host/Source	Rabbit
Reactivity	Human

PRODUCT PROPERTIES

Clonality	Polyclonal
Clone ID	
Concentration	Lot specific
Conjugation	Unconjugated
Purification	Affinity purification
Dilution Range	WB:1:500-1:2000 ELISA:Recommended starting concentration is 1 µg/mL. Please optimize the concentration based on your specific assay requirements.
Formulation	PBS with 0.02% Sodium Azide, 50% Glycerol, pH 7.3.
Isotype	IgG
Storage	Store at -20°C for up to 1 year from the date of receipt, and avoid repeat freeze-thaw cycles.
Instruction	

TARGET INFORMATION

Gene ID	7011
Gene Symbol	TEP1
Uniprot ID	TEP1_HUMAN
Immunogen	
Immunogen Region	2523-2627
Specificity	Recombinant fusion protein containing a sequence corresponding to amino acids 2523-2627 of human TEP1 (NP_009041.2).
Immunogen Sequence	TCRESASMSDASMDSEPT PHLKTRQRRKIHSVLTALH VLPELLVTASKDRDVKLWER PSMQLLGLFRCEGSVSCLEP WLGANSTLQLAVGDVQGNVY FLNWE



Western blot analysis of extracts of DU145 cells, using TEP1 antibody (STJ111886) at 1:1000 dilution. Secondary antibody: HRP Goat Anti-rabbit IgG (H+L) at 1:10000 dilution. Lysates/proteins: 25µg per lane. Blocking buffer: 3% nonfat dry milk in TBST. Detection: ECL Basic Kit. Exposure time: 10s.

This product is suitable for in-vitro studies under the RESEARCH USE ONLY [RUO] licence. This product must not be used as for diagnostic or other medical purposes.
St John's Laboratory Ltd, Knowledge Dock Business Centre, University Way, London, E16 2RD | Tel: 0208 223 3081