

Anti-S100A9 antibody (20-114) (STJ111884)  
STJ111884

GENERAL INFORMATION

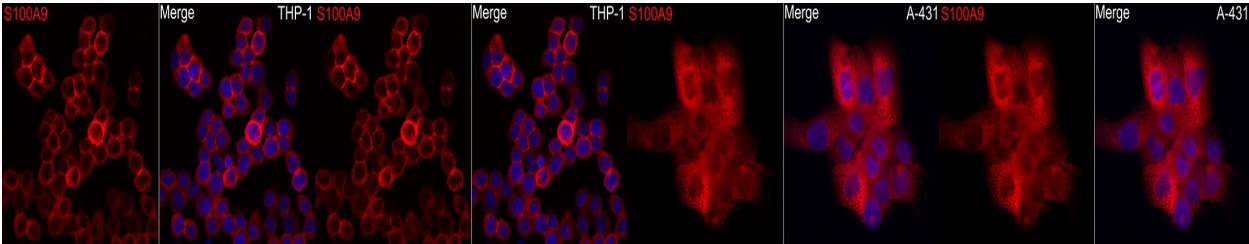
Product Type	Primary antibodies
Short Description	
Applications	WB/IHC-P/IF/ICC/ELISA
Host/Source	Rabbit
Reactivity	Human/Mouse/Rat

PRODUCT PROPERTIES

Clonality	Polyclonal
Clone ID	
Concentration	Lot specific
Conjugation	Unconjugated
Purification	Affinity purification
Dilution Range	WB:1:500-1:1000 IHC-P:1:50-1:200 IF/ICC:1:50-1:200 ELISA:Recommended starting concentration is 1 µg/mL. Please optimize the concentration based on your specific assay requirements.
Formulation	PBS with 0.09% Sodium Azide, 50% Glycerol, pH 7.3.
Isotype	IgG
Storage Instruction	Store at -20°C for up to 1 year from the date of receipt, and avoid repeat freeze-thaw cycles.

TARGET INFORMATION

Gene ID	6280
Gene Symbol	S100A9
Uniprot ID	S100A9_HUMAN
Immunogen	
Immunogen Region	20-114
Specificity	A synthetic peptide corresponding to a sequence within amino acids 20-114 of human S100A9 (NP_002956.1).
Immunogen Sequence	HQYSVKLGHPDTLNQGEFKE LVRKDLQNFLKKENKNEKVI EHIMEDLDTNADKQLSFEFF IMLMARLTWASHEKMHEGDE GPGHHHKPGLGEGTP



Western blot analysis of extracts of various cell lines, using S100A9 antibody (STJ111884) at 1:1000 dilution. Secondary antibody: HRP Goat Anti-rabbit IgG (H+L) at 1:10000 dilution. Lysates/proteins: 25µg per lane. Blocking buffer: 3% non-fat dry milk in TBST. Detection: ECL Basic Kit. Exposure time: 90s.

Immunofluorescence analysis of THP-1 cells using S100A9 Rabbit polyclonal antibody (STJ111884) at dilution of 1:100 (40x lens). Secondary antibody: Cy3 Goat Anti-Rabbit IgG (H+L) at 1:500 dilution. Blue: DAPI for nuclear staining.

Immunohistochemistry of paraffin-embedded human colon carcinoma using S100A9 rabbit polyclonal antibody (STJ111884) at dilution of 1:100 (40x lens).

Immunofluorescence analysis of A-431 cells using S100A9 Rabbit polyclonal antibody (STJ111884) at dilution of 1:100 (40x lens). Secondary antibody: Cy3 Goat Anti-Rabbit IgG (H+L) at 1:500 dilution. Blue: DAPI for nuclear staining.

This product is suitable for in-vitro studies under the RESEARCH USE ONLY [RUO] licence. This product must not be used as for diagnostic or other medical purposes.  
St John's Laboratory Ltd, Knowledge Dock Business Centre, University Way, London, E16 2RD | Tel: 0208 223 3081