

Anti-RPE65 antibody (274-533) (STJ111883)

STJ111883

GENERAL INFORMATION

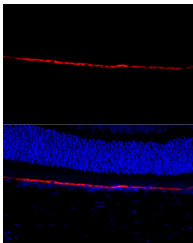
Product Type	Primary antibodies
Short Description	
Applications	WB/IF/ICC/ELISA
Host/Source	Rabbit
Reactivity	Human/Mouse/Rat

PRODUCT PROPERTIES

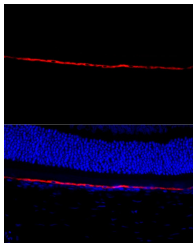
Clonality	Polyclonal
Clone ID	
Concentration	Lot specific
Conjugation	Unconjugated
Purification	Affinity purification
Dilution	WB:1:1000-1:5000
Range	IF/CC:1:50-1:200
	ELISA:Recommended starting concentration is 1 Mu g/mL. Please optimize the concentration based on your specific assay requirements.
Formulation	PBS with 0.02% Sodium Azide, 50% Glycerol, pH 7.3.
Isotype	IgG
Storage Instruction	Store at -20°C for up to 1 year from the date of receipt, and avoid repeat freeze-thaw cycles.

TARGET INFORMATION

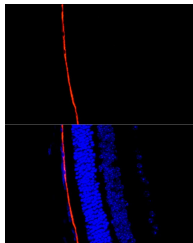
Gene ID	6121
Gene Symbol	RPE65
Uniprot ID	RPE65_HUMAN
Immunogen	
Immunogen Region	274-533
Specificity	Recombinant fusion protein containing a sequence corresponding to amino acids 274-533 of human RPE65 (NP_000320.1).
Immunogen Sequence	NYMDCFESNETMGVWLHIAD KKRKKYLNNKYRTSPFNLFH HINTYEDNGFLIVDLCCWKG FEFVYNYLYLANLRENWEEV KKNARKAPQPEVRRYVLPLN IDKADTGKNLVLPNTTATA ILCSDETIWLEPEVLFSGPR QAFEFQINYQKYCGKPYTY AYGLGLNHFVDPRLCKLNVK TKETWWWQEPDSEYPSEPIFV SHPDALEEDDGWLSVWVSP GAGQKPAYLLILNAKDLSE



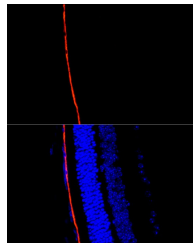
Western blot analysis of extracts of various cell lines, using RPE65 antibody (STJ111883) at 1:1000 dilution. Secondary antibody: HRP Goat Anti-rabbit IgG (H+L) at 1:10000 dilution. Lysates/proteins: 25µg per lane. Blocking buffer: 3% non-fat dry milk in TBST. Detection: ECL Basic Kit. Exposure time: 5s.



Perform microwave antigen retrieval with 10 mM citrate buffer pH 6.0 before commencing with IF staining protocol. Immunofluorescence analysis of paraffin-embedded rat retina using RPE65 Rabbit polyclonal antibody (STJ111883) at dilution of 1:300 (40x lens). Secondary antibody: Cy3 Goat Anti-Rabbit IgG (H+L) at 1:500 dilution. Blue: DAPI for nuclear staining.



Immunofluorescence analysis of Rat eye cells using RPE65 antibody (STJ111883) at dilution of 1:100. Blue: DAPI for nuclear staining.



Perform microwave antigen retrieval with 10 mM citrate buffer pH 6.0 before commencing with IF staining protocol. Immunofluorescence analysis of paraffin-embedded mouse retina using RPE65 Rabbit polyclonal antibody (STJ111883) at dilution of 1:300 (40x lens). Secondary antibody: Cy3 Goat Anti-Rabbit IgG (H+L) at 1:500 dilution. Blue: DAPI for nuclear staining.

This product is suitable for in-vitro studies under the RESEARCH USE ONLY [RUO] licence. This product must not be used as for diagnostic or other medical purposes.
St John's Laboratory Ltd, Knowledge Dock Business Centre, University Way, London, E16 2RD | Tel: 0208 223 3081