

## Anti-OPA1 antibody (200-960) (STJ111875)

STJ111875

### GENERAL INFORMATION

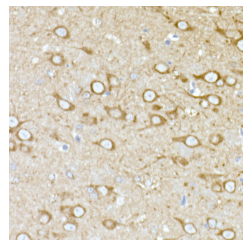
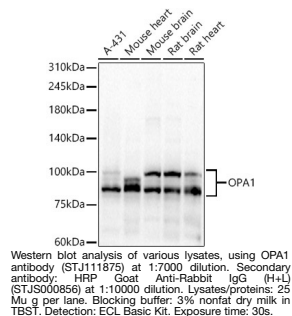
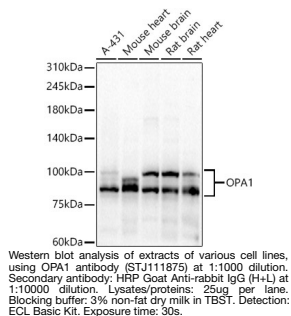
<b>Product Type</b>	Primary antibodies
<b>Short Description</b>	
<b>Applications</b>	WB/IF/ICC/ELISA
<b>Host/Source</b>	Rabbit
<b>Reactivity</b>	Human/Mouse/Rat

### PRODUCT PROPERTIES

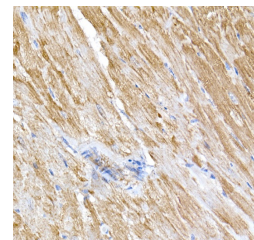
<b>Clonality</b>	Polyclonal
<b>Clone ID</b>	
<b>Concentration</b>	Lot specific
<b>Conjugation</b>	Unconjugated
<b>Purification</b>	Affinity purification
<b>Dilution</b>	WB:1:2000-1:8000
<b>Range</b>	IF/CC:1:50-1:200 ELISA:Recommended starting concentration is 1 Mu g/mL. Please optimize the concentration based on your specific assay requirements.
<b>Formulation</b>	PBS with 0.05% Proclin300, 50% Glycerol, pH 7.3.
<b>Isotype</b>	IgG
<b>Storage Instruction</b>	Store at -20°C for up to 1 year from the date of receipt, and avoid repeat freeze-thaw cycles.

### TARGET INFORMATION

<b>Gene ID</b>	4976
<b>Gene Symbol</b>	OPA1
<b>Uniprot ID</b>	OPA1_HUMAN
<b>Immunogen</b>	
<b>Immunogen Region</b>	200-960
<b>Specificity</b>	Recombinant fusion protein containing a sequence corresponding to amino acids 200-600 of human OPA1 (NP_056375.2).
<b>Immunogen Sequence</b>	SESDKHFRKVSDEKIDQLQ EELLHTQLKYQRILERLEKE NKELRKLVLQKDDKGIHHRK LKKSLLIDMYSEVLDVLSDDYD ASYNTQDHLPRVVVVDQSA GKTSVLEMAQARIFPRGSG EMMTRSPVKVTLSEGPPIHVA LFKDSSREFDLTKEEDLAAL RHEIELMRMKNVKEGCTVSP ETISLNVKGPGLQRMVLVDL PGVINTVTSGMAPDTKETIF SISKAYMQNPNAILCIQD



Immunohistochemistry of paraffin-embedded mouse brain using OPA1 antibody (STJ111875) at dilution of 1:50 (40x lens). 1. Perform high pressure antigen retrieval with 10 mM citrate buffer pH 6. 0 before commencing with immunohistochemistry staining protocol.



Immunohistochemistry of paraffin-embedded mouse heart using OPA1 antibody (STJ111875) at dilution of 1:50 (40x lens). 1. Perform high pressure antigen retrieval with 10 mM citrate buffer pH 6. 0 before commencing with immunohistochemistry staining protocol.

This product is suitable for in-vitro studies under the RESEARCH USE ONLY [RUO] licence. This product must not be used as for diagnostic or other medical purposes.

St John's Laboratory Ltd, Knowledge Dock Business Centre, University Way, London, E16 2RD | Tel: 0208 223 3081