

Anti-EPS15 antibody (660-840) (STJ111856)
STJ111856

GENERAL INFORMATION

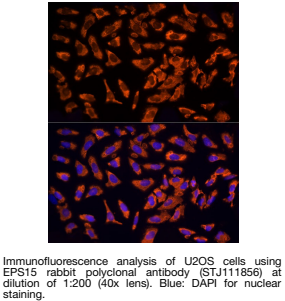
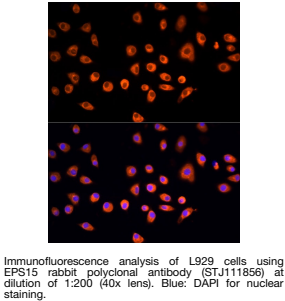
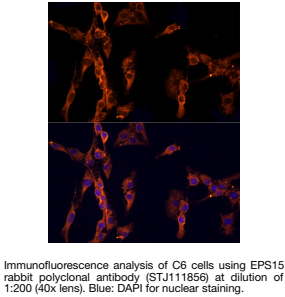
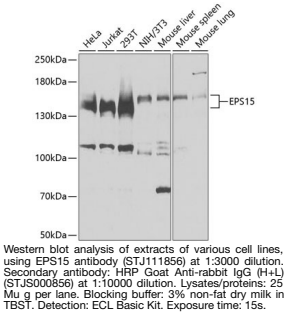
Product Type	Primary antibodies
Short Description	
Applications	WB/IF/ICC/ELISA
Host/Source	Rabbit
Reactivity	Human/Mouse/Rat

PRODUCT PROPERTIES

Clonality	Polyclonal
Clone ID	
Concentration	Lot specific
Conjugation	Unconjugated
Purification	Affinity purification
Dilution	WB: 1:500-1:2000
Range	IF/ICC: 1:50-1:200
	ELISA: Recommended starting concentration is 1 µg/mL. Please optimize the concentration based on your specific assay requirements.
Formulation	PBS with 0.02% Sodium Azide, 50% Glycerol, pH 7.3.
Isotype	IgG
Storage Instruction	Store at -20°C for up to 1 year from the date of receipt, and avoid repeat freeze-thaw cycles.

TARGET INFORMATION

Gene ID	2060
Gene Symbol	EPS15
Uniprot ID	EPS15_HUMAN
Immunogen	
Immunogen Region	660-840
Specificity	Recombinant fusion protein containing a sequence corresponding to amino acids 660-840 of human EPS15 (NP_001972.1).
Immunogen Sequence	RQSTDPFATSSSTDPFSAANN SSITSVELKHNDFAPGGT VVAASDSATDPFASVFGNES FGGGFADFSTLSKVNNDPF RSATSSSVSNVITKNVFEE TSVKSEDEPPALPPKIGTPT RPCPLPPGKRSINKLDSPDP FKLNDPFQPFPGNDSPKEKD PEIFCDPFTSATTTTNKEAD P



This product is suitable for in-vitro studies under the RESEARCH USE ONLY [RUO] licence. This product must not be used as for diagnostic or other medical purposes.
St John's Laboratory Ltd, Knowledge Dock Business Centre, University Way, London, E16 2RD | Tel: 0208 223 3081