

**Anti-CTAG1B antibody (79-93) (STJ111852)**  
STJ111852

**GENERAL INFORMATION**

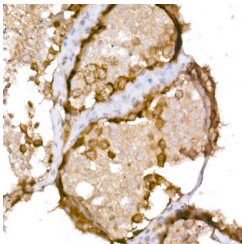
|                          |                    |
|--------------------------|--------------------|
| <b>Product Type</b>      | Primary antibodies |
| <b>Short Description</b> |                    |
| <b>Applications</b>      | WB/IHC-P/ELISA     |
| <b>Host/Source</b>       | Rabbit             |
| <b>Reactivity</b>        | Human              |

**PRODUCT PROPERTIES**

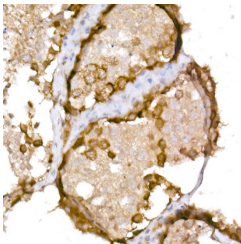
|                       |  |
|-----------------------|--|
| <b>Clonality</b>      | Polyclonal   |
| <b>Clone ID</b>       |  |
| <b>Concentration</b>  | Lot specific   |
| <b>Conjugation</b>    | Unconjugated   |
| <b>Purification</b>   | Affinity purification  |
| <b>Dilution Range</b> | WB:1:500-1:1000<br>IHC-P:1:50-1:200<br>ELISA:Recommended starting concentration is 1 µg/mL. Please optimize the concentration based on your specific assay requirements. |
| <b>Formulation</b>    | PBS with 0.02% Sodium Azide, 50% Glycerol, pH 7.3.   |
| <b>Isotype</b>        | IgG  |
| <b>Storage</b>        | Store at -20°C for up to 1 year from the date of receipt, and avoid repeat freeze-thaw cycles.   |
| <b>Instruction</b>    |  |

**TARGET INFORMATION**

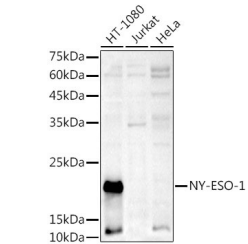
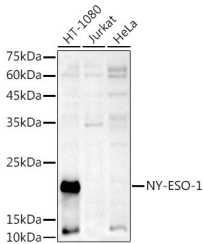
|                         |   |
|-------------------------|---|
| <b>Gene ID</b>          | 1485/246100   |
| <b>Gene Symbol</b>      | CTAG1A.CTAG1B   |
| <b>Uniprot ID</b>       | CTG1B_HUMAN   |
| <b>Immunogen</b>        |   |
| <b>Immunogen Region</b> | 79-93   |
| <b>Specificity</b>      | A synthetic peptide corresponding to a sequence within amino acids 1-100 of human NY-ESO-1 (NP_001318.1).<br>MQAEGRGTTGGSTGDADGPGG PGIPDGPNGAGGPGGEAGT GGRGPRGAGAAARASGPGGGA PRGPHGGAASGLNGCCRCGA |
| <b>Sequence</b>         | RGPE SRLLEFY LAMPFATPM  |



Western blot analysis of extracts of various cell lines, using CTAG1B antibody (STJ111852) at 1:1000 dilution. Secondary antibody: HRP Goat Anti-rabbit IgG (H+L) at 1:10000 dilution. Lysates/proteins: 25 µg per lane. Blocking buffer: 3% non-fat dry milk in TBST. Detection: ECL Basic Kit. Exposure time: 180s.



Immunohistochemistry analysis of paraffin-embedded human testis using NY-ESO-1 Rabbit polyclonal antibody (STJ111852) at dilution of 1:100 (40x lens). Perform high pressure antigen retrieval with 10 mM Tris/EDTA buffer pH 8.0 before commencing with immunohistochemistry staining protocol.



Western blot analysis of extracts of various cell lines, using NY-ESO-1 antibody (STJ111852) at 1:1000 dilution. Secondary antibody: HRP Goat Anti-Rabbit IgG (H+L) (STJS000856) at 1:10000 dilution. Lysates/proteins: 25 µg per lane. Blocking buffer: 3% nonfat dry milk in TBST. Detection: ECL Basic Kit. Exposure time: 180s.

This product is suitable for in-vitro studies under the RESEARCH USE ONLY [RUO] licence. This product must not be used as for diagnostic or other medical purposes.  
St John's Laboratory Ltd, Knowledge Dock Business Centre, University Way, London, E16 2RD | Tel: 0208 223 3081