

Anti-CHRN2 antibody (340-430) (STJ111850)
STJ111850

GENERAL INFORMATION

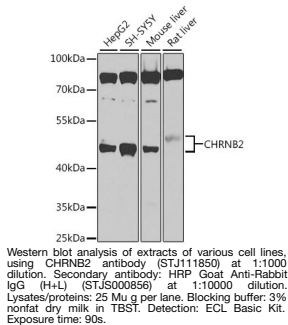
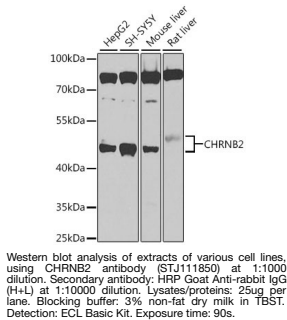
Product Type	Primary antibodies
Short Description	
Applications	WB/IF/ICC/ELISA
Host/Source	Rabbit
Reactivity	Human/Mouse/Rat

PRODUCT PROPERTIES

Clonality	Polyclonal
Clone ID	
Concentration	Lot specific
Conjugation	Unconjugated
Purification	Affinity purification
Dilution Range	WB:1:500-1:2000 IF/ICC:1:50-1:200 ELISA:Recommended starting concentration is 1 µg/mL. Please optimize the concentration based on your specific assay requirements.
Formulation	PBS with 0.02% Sodium Azide, 50% Glycerol, pH 7.3.
Isotype	IgG
Storage Instruction	Store at -20°C for up to 1 year from the date of receipt, and avoid repeat freeze-thaw cycles.

TARGET INFORMATION

Gene ID	1141
Gene Symbol	CHRN2
Uniprot ID	ACHB2_HUMAN
Immunogen	
Immunogen Region	340-430
Specificity	Recombinant fusion protein containing a sequence corresponding to amino acids 340-430 of human CHRN2 (NP_000739.1). LEKLPALLFMQQPRHHCARQRLRLRRRQREREGAGALFFREAPGADSCTCFVNRASVQGLAGAFGAEPAPVAGPGRSGEP
Immunogen Sequence	CGCGLREAVDG



This product is suitable for in-vitro studies under the RESEARCH USE ONLY [RUO] licence. This product must not be used as for diagnostic or other medical purposes.
St John's Laboratory Ltd, Knowledge Dock Business Centre, University Way, London, E16 2RD | Tel: 0208 223 3081