

**Anti-BCAN antibody (762-911) (STJ111678)**  
STJ111678

**GENERAL INFORMATION**

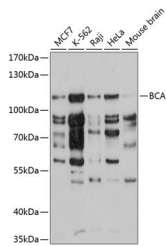
|                          |                    |
|--------------------------|--------------------|
| <b>Product Type</b>      | Primary antibodies |
| <b>Short Description</b> |                    |
| <b>Applications</b>      | WB/ELISA           |
| <b>Host/Source</b>       | Rabbit             |
| <b>Reactivity</b>        | Human/Mouse        |

**PRODUCT PROPERTIES**

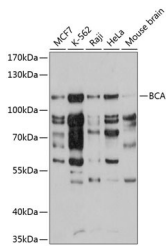
|                      |   |
|----------------------|---|
| <b>Clonality</b>     | Polyclonal  |
| <b>Clone ID</b>      |   |
| <b>Concentration</b> | Lot specific  |
| <b>Conjugation</b>   | Unconjugated  |
| <b>Purification</b>  | Affinity purification   |
| <b>Dilution</b>      | WB:1:500-1:2000   |
| <b>Range</b>         | ELISA:Recommended starting concentration is 1 Mu g/mL. Please optimize the concentration based on your specific assay requirements. |
| <b>Formulation</b>   | PBS with 0.01% Thimerosal, 50% Glycerol, pH 7.3.  |
| <b>Isotype</b>       | IgG   |
| <b>Storage</b>       | Store at-20°C for up to 1 year from the date of receipt, and avoid repeat freeze-thaw cycles.                                       |
| <b>Instruction</b>   |   |

**TARGET INFORMATION**

|                           |   |
|---------------------------|---|
| <b>Gene ID</b>            | 63827   |
| <b>Gene Symbol</b>        | BCAN  |
| <b>Uniprot ID</b>         | PGCB_HUMAN  |
| <b>Immunogen</b>          |   |
| <b>Immunogen Region</b>   | 762-911   |
| <b>Specificity</b>        | Recombinant fusion protein containing a sequence corresponding to amino acids 762-911 of human BCAN (NP_068767.3).  |
| <b>Immunogen Sequence</b> | VPLL <del>Y</del> ENWNPQQDSYFLSG ENCVMMVWHDQGGWSDVPCN YHLSYTCCKMGLVSCGPPPEL PLAQVFGRPRLRYEVDTVLR YRCREGLAQRNLPLIRCQEN GRWEAPQISCVPRRPARALH PEEDPEGRQGRLGRWKALL IPPSSPMPGP |



Western blot analysis of extracts of various cell lines, using BCAN antibody (STJ111678) at 1:3000 dilution. Secondary antibody: HRP Goat Anti-rabbit IgG (H+L) at 1:10000 dilution. Lysates/proteins: 25ug per lane. Blocking buffer: 3% non-fat dry milk in TBST. Detection: ECL Basic Kit. Exposure time: 30s.



Western blot analysis of various lysates using BCAN Rabbit polyclonal antibody (STJ111678) at 1:3000 dilution. Secondary antibody: HRP Goat Anti-Rabbit IgG (H+L) (STJS000856) at 1:10000 dilution. Lysates/proteins: 25 Mu g per lane. Blocking buffer: 3% nonfat dry milk in TBST. Detection: ECL Basic Kit. Exposure time: 30s.

This product is suitable for in-vitro studies under the RESEARCH USE ONLY [RUO] licence. This product must not be used as for diagnostic or other medical purposes.  
St John's Laboratory Ltd, Knowledge Dock Business Centre, University Way, London, E16 2RD | Tel: 0208 223 3081