

Anti-CRYGC antibody (1-174) (STJ111656)

STJ111656

GENERAL INFORMATION

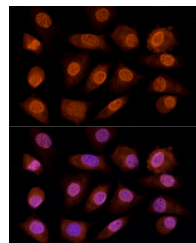
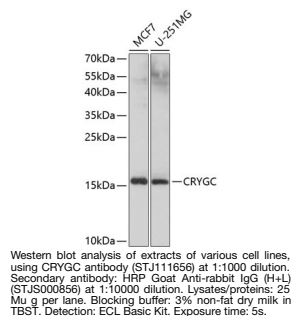
| | |
|--------------------------|--------------------|
| Product Type | Primary antibodies |
| Short Description | |
| Applications | WB/IF/ICC/ELISA |
| Host/Source | Rabbit |
| Reactivity | Human/Mouse/Rat |

PRODUCT PROPERTIES

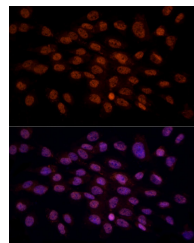
| | |
|----------------------------|--|
| Clonality | Polyclonal |
| Clone ID | |
| Concentration | Lot specific |
| Conjugation | Unconjugated |
| Purification | Affinity purification |
| Dilution | WB:1:1000-1:2000 |
| Range | IF/CC:1:50-1:200 |
| | ELISA:Recommended starting concentration is 1 μ g/mL. Please optimize the concentration based on your specific assay requirements. |
| Formulation | PBS with 0.02% Sodium Azide, 50% Glycerol, pH 7.3. |
| Isotype | IgG |
| Storage Instruction | Store at -20°C for up to 1 year from the date of receipt, and avoid repeat freeze-thaw cycles. |

TARGET INFORMATION

| | |
|---------------------------|--|
| Gene ID | 1420 |
| Gene Symbol | CRYGC |
| Uniprot ID | CRGC_HUMAN |
| Immunogen | |
| Immunogen Region | 1-174 |
| Specificity | Recombinant fusion protein containing a sequence corresponding to amino acids 1-174 of human CRYGC (NP_066269.1). |
| Immunogen Sequence | MGKITFYEDRAFGGRSYETT TDCPNLQPYFSRCNSIRVES GCWMLYERPNYGQQYLLRR GEYPDYQQWMGLSDSIRSCC LIPQTVSHRLRLYEREDHKG LMMELSEDCPSIQDRFHLSE IRSLVHLEGWVLYELPNYR GRQYLLRPQEYRRCQDWGAM DAKAGSLRRVVDLY |



Immunofluorescence analysis of L929 cells using CRYGC antibody (STJ111656) at dilution of 1:100 (40x lens). Blue: DAPI for nuclear staining.



Immunofluorescence analysis of C6 cells using CRYGC antibody (STJ111656) at dilution of 1:100 (40x lens). Blue: DAPI for nuclear staining.

This product is suitable for in-vitro studies under the RESEARCH USE ONLY [RUO] licence. This product must not be used as for diagnostic or other medical purposes.
St John's Laboratory Ltd, Knowledge Dock Business Centre, University Way, London, E16 2RD | Tel: 0208 223 3081