

Anti-EBNA1BP2 antibody (1-306) (STJ111587)
STJ111587

GENERAL INFORMATION

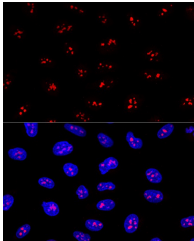
Product Type	Primary antibodies
Short Description	
Applications	WB/IF/ICC/ELISA
Host/Source	Rabbit
Reactivity	Human/Mouse/Rat

PRODUCT PROPERTIES

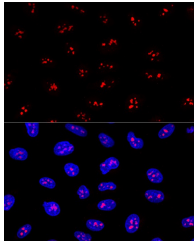
Clonality	Polyclonal
Clone ID	
Concentration	Lot specific
Conjugation	Unconjugated
Purification	Affinity purification
Dilution Range	WB:1:1000-1:2000 IF/CC:1:50-1:200 ELISA:Recommended starting concentration is 1 Mu g/mL. Please optimize the concentration based on your specific assay requirements.
Formulation	PBS with 0.02% Sodium Azide, 50% Glycerol, pH 7.3.
Isotype	IgG
Storage Instruction	Store at -20°C for up to 1 year from the date of receipt, and avoid repeat freeze-thaw cycles.

TARGET INFORMATION

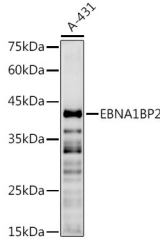
Gene ID	10969
Gene Symbol	EBNA1BP2
Uniprot ID	EBP2_HUMAN
Immunogen	
Immunogen Region	1-306
Specificity	Recombinant fusion protein containing a sequence corresponding to amino acids 1-306 of human EBNA1BP2 (NP_006815.2).
Immunogen Sequence	MDTPPLSDSESESLVTD RELQDAFSRGLLKPLNVVL EGPVKAVNDVNLKQCLAEF KRDLEWVERLDVTLGPVPEI GGSEAPAPQNKDQKAVDPED DFQREMSFYRQAQAAVLAVL PRLHLQKVPTKRPTDYFAEM AKSDLQMQKIRQKLQTKQAA MERSEKAKQLRALRKYGKKV QTEVLQKRQKEAHMMNAIK KYQKGFSDKLDLFLEGDQKPL AQRKKAGAKGQQMRKGPSA



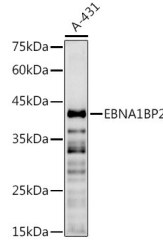
Western blot analysis of extracts of A-431 cells, using EBNA1BP2 antibody (STJ111587) at 1:1000 dilution. Secondary antibody: HRP Goat Anti-rabbit IgG (H+L) at 1:10000 dilution. Lysates/proteins: 25ug per lane. Blocking buffer: 3% non-fat dry milk in TBST. Detection: ECL Basic Kit. Exposure time: 30s.



Confocal immunofluorescence analysis of U2OS cells using EBNA1BP2 Polyclonal Antibody (STJ111587) at dilution of 1:200. Blue: DAPI for nuclear staining.



Confocal immunofluorescence analysis of U2OS cells using EBNA1BP2 Polyclonal Antibody (STJ111587) at dilution of 1:200. Blue: DAPI for nuclear staining.



Western blot analysis of extracts of A-431 cells, using EBNA1BP2 antibody (STJ111587) at 1:1000 dilution. Secondary antibody: HRP Goat Anti-rabbit IgG (H+L) (STJ5000856) at 1:10000 dilution. Lysates/proteins: 25 Mu g per lane. Blocking buffer: 3% nonfat dry milk in TBST. Detection: ECL Basic Kit. Exposure time: 30s.

This product is suitable for in-vitro studies under the RESEARCH USE ONLY [RUO] licence. This product must not be used as for diagnostic or other medical purposes.
St John's Laboratory Ltd, Knowledge Dock Business Centre, University Way, London, E16 2RD | Tel: 0208 223 3081