

Anti-NRD1 antibody (160-400) (STJ111579)
STJ111579

GENERAL INFORMATION

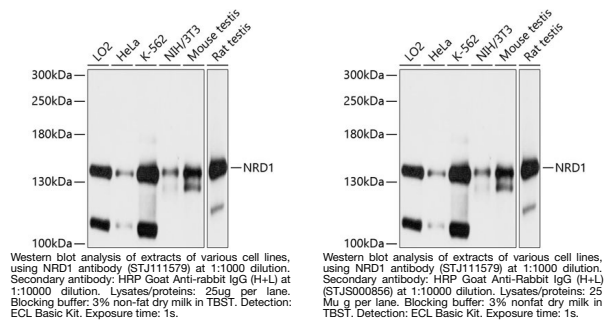
Product Type	Primary antibodies
Short Description	
Applications	WB/ELISA
Host/Source	Rabbit
Reactivity	Human/Mouse/Rat

PRODUCT PROPERTIES

Clonality	Polyclonal
Clone ID	
Concentration	Lot specific
Conjugation	Unconjugated
Purification	Affinity purification
Dilution	WB:1:200-1:2000
Range	ELISA:Recommended starting concentration is 1 µg/mL. Please optimize the concentration based on your specific assay requirements.
Formulation	PBS with 0.02% Sodium Azide, 50% Glycerol, pH 7.3.
Isotype	IgG
Storage	Store at -20°C for up to 1 year from the date of receipt, and avoid repeat freeze-thaw cycles.
Instruction	

TARGET INFORMATION

Gene ID	4898
Gene Symbol	NRDC
Uniprot ID	NRDC_HUMAN
Immunogen	
Immunogen Region	160-400
Specificity	Recombinant fusion protein containing a sequence corresponding to amino acids 160-400 of human NRD1 (NP_001095132.1). SGAEIEDDDEEGFDDDEFD DEHDDDLDTEDNELEEER AEARKKTEKQSAALCVGV GSFADPDDLPLGLAHFLEHVMV FMGSLKYPDENGFDALFKKH GGSDNASTDCERTVFQFDVQ RKYFKEALDRWAQFFIHLPLM IRDAIDREVEAVDSEYQLAR PSDANRKEMLFGLSLARPGHP MGKFFWGNAAETLKHEPRKNN IDTHARLREFWMRYSSHYM TLVVQSKETLDTLEKWWTE
Immunogen Sequence	



This product is suitable for in-vitro studies under the RESEARCH USE ONLY [RUO] licence. This product must not be used as for diagnostic or other medical purposes.
St John's Laboratory Ltd, Knowledge Dock Business Centre, University Way, London, E16 2RD | Tel: 0208 223 3081