

Anti-SIRPA antibody (220-504) (STJ111516)

STJ111516

GENERAL INFORMATION

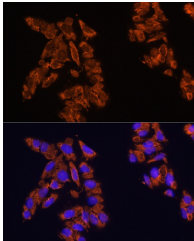
Product Type	Primary antibodies
Short Description	
Applications	WB/IF/ICC/ELISA
Host/Source	Rabbit
Reactivity	Human/Mouse/Rat

PRODUCT PROPERTIES

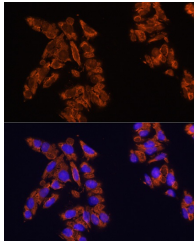
Clonality	Polyclonal
Clone ID	
Concentration	Lot specific
Conjugation	Unconjugated
Purification	Affinity purification
Dilution	WB:1:500-1:2000
Range	IF/CC:1:50-1:200
	ELISA:Recommended starting concentration is 1 μ g/mL. Please optimize the concentration based on your specific assay requirements.
Formulation	PBS with 0.09% Sodium Azide, 50% Glycerol, pH 7.3.
Isotype	IgG
Storage Instruction	Store at -20°C for up to 1 year from the date of receipt, and avoid repeat freeze-thaw cycles.

TARGET INFORMATION

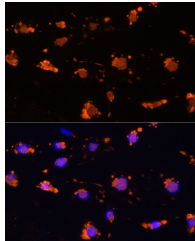
Gene ID	140885
Gene Symbol	SIRPA
Uniprot ID	SHPS1_HUMAN
Immunogen	
Immunogen Region	220-504
Specificity	Recombinant fusion protein containing a sequence corresponding to amino acids 220-375 of human CD172a/SIRP Alpha (NP_542970.1).
Immunogen Sequence	EDVHSQVCEVAHVTLQGDP LRGTANLSETIRVPPTLEV TQQPVR AENQVNVTCQVRKFY PQRQLTWLENGNVSRTETA STVTENKDGTYNWMSWLLVN VSAHRDDVKLTQVEHDGQP AVSKSHDLK VSAHPKEQGSN TAAENTGSNERNIYIV



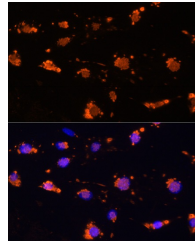
Western blot analysis of extracts of various cell lines, using CD172a/SIRP Alpha antibody (STJ111516) at 1:1000 dilution. Secondary antibody: HRP Goat Anti-rabbit IgG (H+L) at 1:10000 dilution. Lysates/proteins: 25ug per lane. Blocking buffer: 3% non-fat dry milk in TBST. Detection: ECL Basic Kit. Exposure time: 1s.



Immunofluorescence analysis of U2OS cells using CD172a/SIRP Alpha Rabbit polyclonal antibody (STJ111516) at dilution of 1:100 (40x lens). Blue: DAPI for nuclear staining.



Immunofluorescence analysis of H9C2 cells using CD172a/SIRP Alpha rabbit polyclonal antibody (STJ111516) at dilution of 1:100 (40x lens). Blue: DAPI for nuclear staining.



Immunofluorescence analysis of L929 cells using CD172a/SIRP Alpha Rabbit polyclonal antibody (STJ111516) at dilution of 1:100 (40x lens). Blue: DAPI for nuclear staining.

This product is suitable for in-vitro studies under the RESEARCH USE ONLY [RUO] licence. This product must not be used as for diagnostic or other medical purposes.
St John's Laboratory Ltd, Knowledge Dock Business Centre, University Way, London, E16 2RD | Tel: 0208 223 3081