

Anti-FHL3 antibody (1-280) (STJ111377)
STJ111377

GENERAL INFORMATION

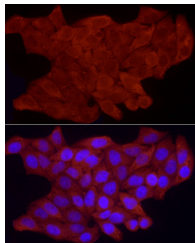
| | |
|--------------------------|--------------------|
| Product Type | Primary antibodies |
| Short Description | |
| Applications | WB/IF/ICC/ELISA |
| Host/Source | Rabbit |
| Reactivity | Human/Mouse |

PRODUCT PROPERTIES

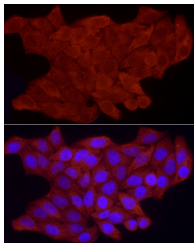
| | |
|----------------------------|--|
| Clonality | Polyclonal |
| Clone ID | |
| Concentration | Lot specific |
| Conjugation | Unconjugated |
| Purification | Affinity purification |
| Dilution Range | WB:1:500-1:2000 IF/CC:1:50-1:200 ELISA:Recommended starting concentration is 1 Mu g/mL. Please optimize the concentration based on your specific assay requirements. |
| Formulation | PBS with 0.02% Sodium Azide, 50% Glycerol, pH 7.3. |
| Isotype | IgG |
| Storage Instruction | Store at -20°C for up to 1 year from the date of receipt, and avoid repeat freeze-thaw cycles. |

TARGET INFORMATION

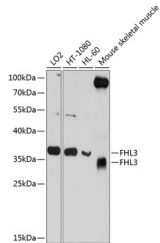
| | |
|---------------------------|---|
| Gene ID | 2275 |
| Gene Symbol | FHL3 |
| Uniprot ID | FHL3_HUMAN |
| Immunogen | |
| Immunogen Region | 1-280 |
| Specificity | Recombinant fusion protein containing a sequence corresponding to amino acids 1-280 of human FHL3 (NP_004459.2). |
| Immunogen Sequence | MSESFCAKCNESLYGRKYI QTDSGPYCVCYDNTFANTC AECQQLIGHDSRELFYEDRH FHEGCFRCRCRQSLADEPF TCQDSSELLCNDICYCSAFSSQ CSACGETVMPGSRKLEYGGQ TWHEHCFLCSGCEQPLGSR S FVPDKGAHYCVPCYENKFAP RCARCSKTLTQGGVTYRDQP WHRECLVCTGCQTPLAGQQF TSRDEDPYCVACFGELFAPK CSSCKRPVGLGGGKYVSF |



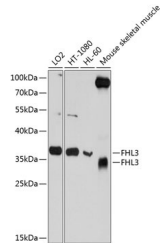
Western blot analysis of extracts of various cell lines, using FHL3 antibody (STJ111377) at 1:1000 dilution. Secondary antibody: HRP Goat Anti-rabbit IgG (H+L) at 1:10000 dilution. Lysates/proteins: 25ug per lane. Blocking buffer: 3% non-fat dry milk in TBST. Detection: ECL Basic Kit. Exposure time: 10s.



Immunofluorescence analysis of HeLa cells using FHL3 antibody (STJ111377) at 1:100 dilution. Secondary antibody: HRP Goat Anti-rabbit IgG (H+L) at 1:10000 dilution. Lysates/proteins: 25ug per lane. Blocking buffer: 3% non-fat dry milk in TBST. Detection: ECL Basic Kit. Exposure time: 10s.



Immunofluorescence analysis of HeLa cells using FHL3 antibody (STJ111377) at 1:100 dilution. Secondary antibody: HRP Goat Anti-rabbit IgG (H+L) at 1:10000 dilution. Lysates/proteins: 25ug per lane. Blocking buffer: 3% non-fat dry milk in TBST. Detection: ECL Basic Kit. Exposure time: 10s.



Western blot analysis of extracts of various cell lines, using FHL3 antibody (STJ111377) at 1:1000 dilution. Secondary antibody: HRP Goat Anti-Rabbit IgG (H+L) (STJ5000856) at 1:10000 dilution. Lysates/proteins: 25 Mu g per lane. Blocking buffer: 3% nonfat dry milk in TBST. Detection: ECL Basic Kit. Exposure time: 10s.

This product is suitable for in-vitro studies under the RESEARCH USE ONLY [RUO] licence. This product must not be used as for diagnostic or other medical purposes.
St John's Laboratory Ltd, Knowledge Dock Business Centre, University Way, London, E16 2RD | Tel: 0208 223 3081