

Anti-ALDH7A1 antibody (430-539) (STJ111351)

STJ111351

GENERAL INFORMATION

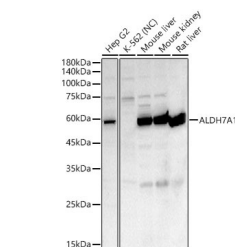
Product Type	Primary antibodies
Short Description	
Applications	WB/IHC-P/IF/ICC/ELISA
Host/Source	Rabbit
Reactivity	Human/Mouse/Rat

PRODUCT PROPERTIES

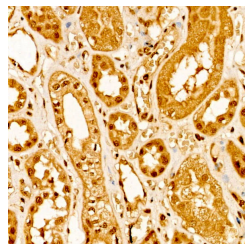
Clonality	Polyclonal
Clone ID	
Concentration	Lot specific
Conjugation	Unconjugated
Purification	Affinity purification
Dilution Range	WB:1:100-1:500 IHC-P:1:50-1:200 IF/ICC:1:50-1:200 ELISA:Recommended starting concentration is 1 µg/mL. Please optimize the concentration based on your specific assay requirements.
Formulation	PBS with 0.02% Sodium Azide, 50% Glycerol, pH 7.3.
Isotype	IgG
Storage	Store at -20°C for up to 1 year from the date of receipt, and avoid repeat freeze-thaw cycles.
Instruction	

TARGET INFORMATION

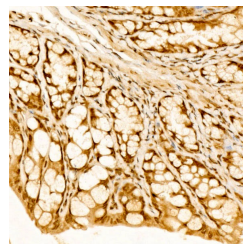
Gene ID	501
Gene Symbol	ALDH7A1
Uniprot ID	AL7A1_HUMAN
Immunogen	
Immunogen Region	430-539
Specificity	Recombinant fusion protein containing a sequence corresponding to amino acids 430-539 of human ALDH7A1 (NP_001173.2).
Immunogen Sequence	APILYVFKFKNEEEVFAWNN EVKQGLSSSIFTKDLGRIFR WLGPKGSDCGIVNVNIPTSG AEIGGAFGGEKHTGGGREGS SDAWKQYMRSTCTINYSKD LPLAQGIKFQ



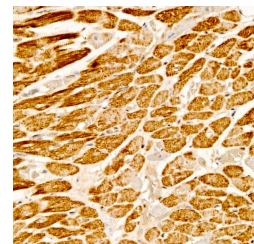
Western blot analysis of various lysates, using ALDH7A1 rabbit polyclonal antibody (STJ111351) at 1:400 dilution. Secondary antibody: HRP Coated Anti-rabbit IgG (H+L) (STJS000856) at 1:10000 dilution. Lysates/proteins: 25µg per lane. Blocking buffer: 3% non-fat dry milk in TBST. Detection: ECL Enhanced Kit. Negative control (NC) : K-562. Exposure time: 75s.



Immunohistochemistry analysis of ALDH7A1 in paraffin-embedded human kidney tissue using ALDH7A1 rabbit polyclonal antibody (STJ111351) at a dilution of 1:50 (40x lens). High pressure antigen retrieval was performed with 0.01 M citrate buffer (pH 6.0) prior to immunohistochemistry staining.



Immunohistochemistry analysis of ALDH7A1 in paraffin-embedded mouse colon tissue using ALDH7A1 rabbit polyclonal antibody (STJ111351) at a dilution of 1:50 (40x lens). High pressure antigen retrieval was performed with 0.01 M citrate buffer (pH 6.0) prior to immunohistochemistry staining.



Immunohistochemistry analysis of ALDH7A1 in paraffin-embedded rat heart tissue using ALDH7A1 rabbit polyclonal antibody (STJ111351) at a dilution of 1:50 (40x lens). High pressure antigen retrieval was performed with 0.01 M citrate buffer (pH 6.0) prior to immunohistochemistry staining.

This product is suitable for in-vitro studies under the RESEARCH USE ONLY [RUO] licence. This product must not be used as for diagnostic or other medical purposes.
St John's Laboratory Ltd, Knowledge Dock Business Centre, University Way, London, E16 2RD | Tel: 0208 223 3081