

Anti-ARID2 antibody (1586-1835) (STJ111333)
STJ111333

GENERAL INFORMATION

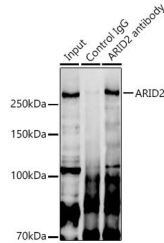
Product Type	Primary antibodies
Short Description	
Applications	WB/IP/ELISA
Host/Source	Rabbit
Reactivity	Human

PRODUCT PROPERTIES

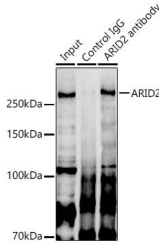
Clonality	Polyclonal
Clone ID	
Concentration	Lot specific
Conjugation	Unconjugated
Purification	Affinity purification
Dilution	WB:1:500-1:2000
Range	IP:0.5 Mu g-4 Mu g antibody for 200 Mu g-400 Mu g extracts of whole cells ELISA:Recommended starting concentration is 1 Mu g/mL. Please optimize the concentration based on your specific assay requirements.
Formulation	PBS with 0.02% Sodium Azide, 50% Glycerol, pH 7.3.
Isotype	IgG
Storage Instruction	Store at -20°C for up to 1 year from the date of receipt, and avoid repeat freeze-thaw cycles.

TARGET INFORMATION

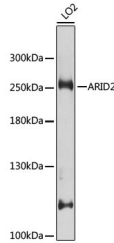
Gene ID	196528
Gene Symbol	ARID2
Uniprot ID	ARID2_HUMAN
Immunogen	
Immunogen Region	1586-1835
Specificity	Recombinant fusion protein containing a sequence corresponding to amino acids 1586-1835 of human ARID2 (NP_689854.2).
Immunogen Sequence	QNVVPQNTMPPPSPAVQVQG QPNSSQSPFSGSSQPGDPM RKGQGNFMCLWQSKKWFQT PSQVFYHAATEHGGKDVYPG QCLWEGCEPFQRQRFSEITH LQDKHCCKDALLAGLKQDEP GQAGSQKSSTKQPTVGGTSS TPRAQKAIVNHPSAALMALR RGSRLNVFRDFTDEKEGPIT KHIRLTAALILKNIGKYSEC GRLLKXRNHNNLSVLAINNM EASSTLAKCLYELNFTVQS



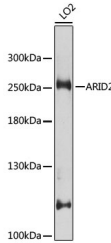
Western blot analysis of extracts of LO2 cells, using ARID2 antibody (STJ111333) at 1:1000 dilution. Secondary antibody: HRP Goat Anti-rabbit IgG (H+L) at 1:10000 dilution. Lysates/proteins: 25µg per lane. Blocking buffer: 3% non-fat dry milk in TBST. Detection: ECL Basic Kit. Exposure time: 30s.



Immunoprecipitation analysis of 300 Mu g extracts of 293F cells using 3 Mu g ARID2 Rabbit polyclonal antibody (STJ111333). Western blot was performed from the immunoprecipitate using ARID2 Rabbit polyclonal antibody (STJ111333) at a dilution of 1:1000.



Western blot analysis of extracts from normal (control) and ARID2 knockout (KO) HeLa cells, using ARID2 antibody (STJ111333) at 1:500 dilution. Secondary antibody: HRP Goat Anti-rabbit IgG (H+L) at 1:10000 dilution. Lysates/proteins: 25µg per lane. Blocking buffer: 3% non-fat dry milk in TBST. Detection: ECL Basic Kit. Exposure time: 10s.



Western blot analysis of lysates from LO2 cells, using ARID2 Rabbit polyclonal antibody (STJ111333) at 1:1000 dilution. Secondary antibody: HRP Goat Anti-Rabbit IgG (H+L) (STJ500856) at 1:10000 dilution. Lysates/proteins: 25 Mu g per lane. Blocking buffer: 3% nonfat dry milk in TBST. Detection: ECL Basic Kit. Exposure time: 30s.

This product is suitable for in-vitro studies under the RESEARCH USE ONLY [RUO] licence. This product must not be used as for diagnostic or other medical purposes.
St John's Laboratory Ltd, Knowledge Dock Business Centre, University Way, London, E16 2RD | Tel: 0208 223 3081