

Anti-TRPV1 antibody (725-839) (STJ111299)

STJ111299

GENERAL INFORMATION

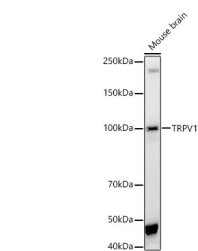
Product Type	Primary antibodies
Short Description	
Applications	WB/IF/ICC/ELISA
Host/Source	Rabbit
Reactivity	Human/Mouse/Rat

PRODUCT PROPERTIES

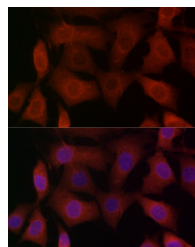
Clonality	Polyclonal
Clone ID	
Concentration	Lot specific
Conjugation	Unconjugated
Purification	Affinity purification
Dilution Range	WB:1:500-1:1000 IF/ICC:1:50-1:200 ELISA:Recommended starting concentration is 1 µg/mL. Please optimize the concentration based on your specific assay requirements.
Formulation	PBS with 0.09% Sodium Azide, 50% Glycerol, pH 7.3.
Isotype	IgG
Storage Instruction	Store at -20°C for up to 1 year from the date of receipt, and avoid repeat freeze-thaw cycles.

TARGET INFORMATION

Gene ID	7442
Gene Symbol	TRPV1
Uniprot ID	TRPV1_HUMAN
Immunogen	
Immunogen Region	725-839
Specificity	A synthetic peptide corresponding to a sequence within amino acids 725-839 of human TRPV1 (NP_061197.4).
Immunogen Sequence	KLLQVGTYTPDGKDDYRWCFR VDEVNWTWNTNVGIINEDP GNCEGVKRTLFSLSRSSRVSGRHWKNFALVPLLREASARD RQSAQPEEVYLRQFSGSLKP EDAEVFKSPAASGEK



Western blot analysis of mouse brain, using TRPV1 rabbit polyclonal antibody (STJ111299) at 1:1000 dilution. Secondary antibody: HRP Goat Anti-rabbit IgG (H+L) (STJS000856) at 1:10000 dilution. Lysates/proteins: 25 µg per lane. Blocking buffer: 3% non-fat dry milk in TBST. Detection: ECL Basic Kit. Exposure time: 30s.



Immunofluorescence analysis of NIH/3T3 cells using TRPV1 rabbit polyclonal antibody (STJ111299) at dilution of 1:100 (40x lens). Blue: DAPI for nuclear staining.