

Anti-PTPRD antibody (475-574) (STJ111295)

STJ111295

GENERAL INFORMATION

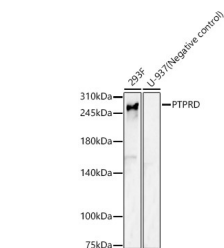
Product Type	Primary antibodies
Short Description	
Applications	WB/IHC-P/ELISA
Host/Source	Rabbit
Reactivity	Human/Mouse

PRODUCT PROPERTIES

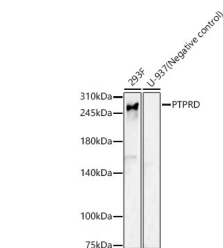
Clonality	Polyclonal
Clone ID	
Concentration	Lot specific
Conjugation	Unconjugated
Purification	Affinity purification
Dilution Range	WB:1:500-1:2000 IHC-P:1:100-1:200 ELISA:Recommended starting concentration is 1 Mu g/mL. Please optimize the concentration based on your specific assay requirements.
Formulation	PBS with 0.02% Sodium Azide, 50% Glycerol, pH 7.3.
Isotype	IgG
Storage Instruction	Store at -20°C for up to 1 year from the date of receipt, and avoid repeat freeze-thaw cycles.

TARGET INFORMATION

Gene ID	5789
Gene Symbol	PTPRD
Uniprot ID	PTPRD_HUMAN
Immunogen	
Immunogen Region	475-574
Specificity	Recombinant fusion protein containing a sequence corresponding to amino acids 475-574 of human PTPRD (NP_002830.1). QITTIGNLVPKTYSVKVLA FTSIGDGPLSSDIQVITQTG VPGQPLNFKAPESETSILL SWTPPRSDTIANVELVYKDG
Immunogen Sequence	EHGEEQRITIEPGTSYRLQG



Western blot analysis of extracts of various cell lines, using PTPRD Antibody (STJ111295) at 1:1000 dilution. Secondary antibody: HRP Goat Anti-rabbit IgG (H+L) at 1:10000 dilution. Lysates/proteins: 25µg per lane. Blocking buffer: 3% non-fat dry milk in TBST. Detection: ECL Basic Kit. Exposure time: 30s.



Western blot analysis of various lysates, using PTPRD Rabbit polyclonal antibody (STJ111295) at 1:500 dilution. Secondary antibody: HRP Goat Anti-Rabbit IgG (H+L) (STJ5000656) at 1:10000 dilution. Lysates/proteins: 25 Mu g per lane. Blocking buffer: 3% nonfat dry milk in TBST. Detection: ECL Basic Kit. Exposure time: 180s.

This product is suitable for in-vitro studies under the RESEARCH USE ONLY [RUO] licence. This product must not be used as for diagnostic or other medical purposes.
St John's Laboratory Ltd, Knowledge Dock Business Centre, University Way, London, E16 2RD | Tel: 0208 223 3081