

Anti-MYO5B antibody (1440-1690) (STJ111294)

STJ111294

GENERAL INFORMATION

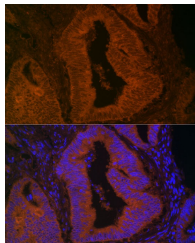
Product Type	Primary antibodies
Short Description	
Applications	WB/IF/ICG/ELISA
Host/Source	Rabbit
Reactivity	Human/Mouse

PRODUCT PROPERTIES

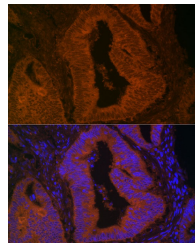
Clonality	Polyclonal
Clone ID	
Concentration	Lot specific
Conjugation	Unconjugated
Purification	Affinity purification
Dilution	WB:1:500-1:2000
Range	IF/ICG:1:50-1:200
	ELISA:Recommended starting concentration is 1 Mu g/mL. Please optimize the concentration based on your specific assay requirements.
Formulation	PBS with 0.02% Sodium Azide, 50% Glycerol, pH 7.3.
Isotype	IgG
Storage Instruction	Store at -20°C for up to 1 year from the date of receipt, and avoid repeat freeze-thaw cycles.

TARGET INFORMATION

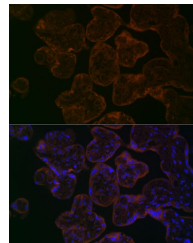
Gene ID	4645
Gene Symbol	MYO5B
Uniprot ID	MYO5B_HUMAN
Immunogen Region	1440-1690
Specificity	Recombinant fusion protein containing a sequence corresponding to amino acids 1440-1690 of human MYO5B (NP_001073936.1).
Immunogen Sequence	AQALAQSERKRHELNRQVTV QRKEKDFQGMLEYHKEDEAL LIRNLVTDLKPQMLSGTVPC LPAYILYMCIRHADYTNDL KVHSLLTSTINGIKKVLKHH NDDFEMTSFWLSNTCRLLHC LKQYSGDEGFMTQNTAKQNE HCLKNFDLTYRQVLSDLSDLSI QIYQQLKIAEGVLQPMIVS AMLNESIQGLSGVKPTGYR KRSSSMADGDNSYCLEAIR QMNAFHTVMCDQGLDPEII



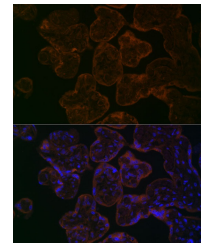
Western blot analysis of extracts of various cell lines, using MYO5B antibody (STJ111294) at 1:1000 dilution. Secondary antibody: HRP Goat Anti-rabbit IgG (H+L) at 1:10000 dilution. Lysates/proteins: 25ug per lane. Blocking buffer: 3% non-fat dry milk in TBST. Detection: ECL Enhanced Kit. Exposure time: 30s.



Immunofluorescence analysis of Human colon carcinoma using MYO5B antibody (STJ111294) at dilution of 1:100. Blue: DAPI for nuclear staining.



Immunofluorescence analysis of Human placenta using MYO5B antibody (STJ111294) at dilution of 1:100. Blue: DAPI for nuclear staining.



Immunofluorescence analysis of Human placenta using MYO5B antibody (STJ111294) at dilution of 1:100. Blue: DAPI for nuclear staining.

This product is suitable for in-vitro studies under the RESEARCH USE ONLY [RUO] licence. This product must not be used as for diagnostic or other medical purposes.
St John's Laboratory Ltd, Knowledge Dock Business Centre, University Way, London, E16 2RD | Tel: 0208 223 3081