

Anti-L1CAM antibody (1143-1257) (STJ111291)

STJ111291

GENERAL INFORMATION

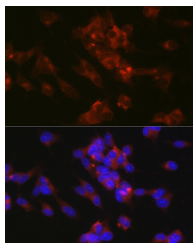
Product Type	Primary antibodies
Short Description	
Applications	WB/IF/ICC/ELISA
Host/Source	Rabbit
Reactivity	Human/Mouse/Rat

PRODUCT PROPERTIES

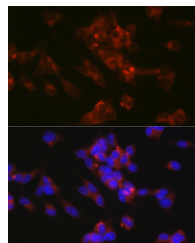
Clonality	Polyclonal
Clone ID	
Concentration	Lot specific
Conjugation	Unconjugated
Purification	Affinity purification
Dilution Range	WB:1:500-1:1000 IF/ICC:1:50-1:200 ELISA:Recommended starting concentration is 1 Mu g/mL. Please optimize the concentration based on your specific assay requirements.
Formulation	PBS with 0.02% Sodium Azide, 50% Glycerol, pH 7.3.
Isotype	IgG
Storage Instruction	Store at -20°C for up to 1 year from the date of receipt, and avoid repeat freeze-thaw cycles.

TARGET INFORMATION

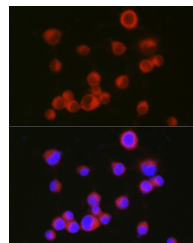
Gene ID	3897
Gene Symbol	L1CAM
Uniprot ID	L1CAM_HUMAN
Immunogen	
Immunogen	1143-1257
Region	
Specificity	Recombinant fusion protein containing a sequence corresponding to amino acids 1143-1257 of human CD171/L1CAM (NP_000416.1).
Immunogen Sequence	IKRSKGGKYSVKDKEDTQVD SEARPMKDETFGEYRSLESD NEEKAFGSSQPSLNGDIKPL GSDDSLADYGGSDVDVQFNED GSFIGQYSGKKEKAAGGND SSGATSPINPAVALE



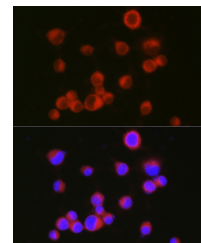
Western blot analysis of extracts from normal (control) and L1CAM knockout (KO) HeLa cells, using L1CAM antibody (STJ111291) at 1:1000 dilution. Secondary antibody: HRP Goat Anti-rabbit IgG (H+L) at 1:10000 dilution. Lysates/proteins: 25ug per lane. Blocking buffer: 3% non-fat dry milk in TBST. Detection: ECL Basic Kit. Exposure time: 1s.



Immunofluorescence analysis of SH-SY5Y cells using CD171/L1CAM Rabbit polyclonal antibody (STJ111291) at dilution of 1:100 (40x lens). Blue: DAPI for nuclear staining.



Western blot analysis of extracts of various cell lines, using L1CAM antibody (STJ111291) at 1:1000 dilution. Secondary antibody: HRP Goat Anti-rabbit IgG (H+L) at 1:10000 dilution. Lysates/proteins: 25ug per lane. Blocking buffer: 3% non-fat dry milk in TBST. Detection: ECL Basic Kit. Exposure time: 30s.



Immunofluorescence analysis of Neuro-2a cells using CD171/L1CAM Rabbit polyclonal antibody (STJ111291) at dilution of 1:100 (40x lens). Blue: DAPI for nuclear staining.

This product is suitable for in-vitro studies under the RESEARCH USE ONLY [RUO] licence. This product must not be used as for diagnostic or other medical purposes.

St John's Laboratory Ltd, Knowledge Dock Business Centre, University Way, London, E16 2RD | Tel: 0208 223 3081