

Anti-KCNJ1 antibody (50-150) (STJ111290)

STJ111290

GENERAL INFORMATION

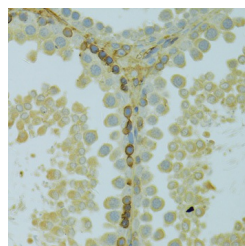
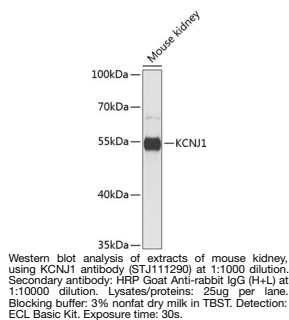
Product Type	Primary antibodies
Short Description	
Applications	WB/IHC-P/ELISA
Host/Source	Rabbit
Reactivity	Mouse/Rat

PRODUCT PROPERTIES

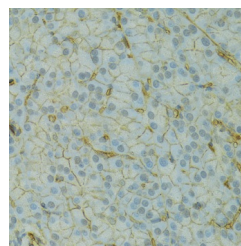
Clonality	Polyclonal
Clone ID	
Concentration	Lot specific
Conjugation	Unconjugated
Purification	Affinity purification
Dilution Range	WB:1:500-1:2000 IHC-P:1:50-1:200 ELISA:Recommended starting concentration is 1 µg/mL. Please optimize the concentration based on your specific assay requirements.
Formulation	PBS with 0.02% Sodium Azide, 50% Glycerol, pH 7.3.
Isotype	IgG
Storage Instruction	Store at -20°C for up to 1 year from the date of receipt, and avoid repeat freeze-thaw cycles.

TARGET INFORMATION

Gene ID	3758
Gene Symbol	KCNJ1
Uniprot ID	KCNJ1_HUMAN
Immunogen	
Immunogen Region	50-150
Specificity	A synthetic peptide corresponding to a sequence within amino acids 50-150 of human KCNJ1 (NP_000211.1). NIEFGNVEAQSRFIFFDIWTTVLDLKWRYKMTIFITAFLLGSWFFFGLLWYAVAYIHKDLPEFHPSANHTPCVENINGLT
Immunogen Sequence	SAFLFSLETQVTIGYGFRCV T



Immunohistochemistry of paraffin-embedded rat testis using KCNJ1 antibody (STJ111290) at dilution of 1:100 (40x lens).



Immunohistochemistry of paraffin-embedded rat pancreas using KCNJ1 antibody (STJ111290) at dilution of 1:100 (40x lens).

This product is suitable for in-vitro studies under the RESEARCH USE ONLY [RUO] licence. This product must not be used as for diagnostic or other medical purposes.

St John's Laboratory Ltd, Knowledge Dock Business Centre, University Way, London, E16 2RD | Tel: 0208 223 3081