

Anti-AQP9 antibody (211-295) (STJ111279)
STJ111279

GENERAL INFORMATION

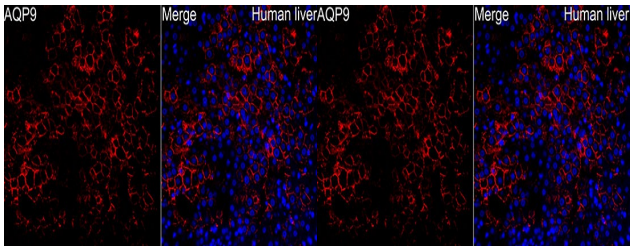
Product Type	Primary antibodies
Short Description	
Applications	WB/IHC-P/IF/ICC/ELISA
Host/Source	Rabbit
Reactivity	Human/Mouse

PRODUCT PROPERTIES

Clonality	Polyclonal
Clone ID	
Concentration	Lot specific
Conjugation	Unconjugated
Purification	Affinity purification
Dilution Range	WB:1:500-1:1000 IHC-P:1:50-1:200 IF/ICC:1:50-1:200 ELISA:Recommended starting concentration is 1 µg/mL. Please optimize the concentration based on your specific assay requirements.
Formulation	PBS with 0.02% Sodium Azide, 50% Glycerol, pH 7.3.
Isotype	IgG
Storage Instruction	Store at -20°C for up to 1 year from the date of receipt, and avoid repeat freeze-thaw cycles.

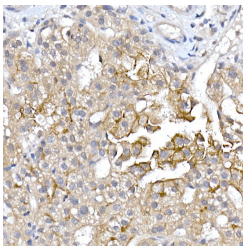
TARGET INFORMATION

Gene ID	366
Gene Symbol	AQP9
Uniprot ID	AQP9_HUMAN
Immunogen	
Immunogen Region	211-295
Specificity	Recombinant fusion protein containing a sequence corresponding to amino acids 211-295 of human AQP9 (NP_066190.2).
Immunogen Sequence	SGCAMNPARDLSPLRLTALA GWGFEVFRAGNNFWIPVVG PLVGAVIGGLIYVLVIEIHH PEPDSVFKTEQSEDKPEKYE LSVIM

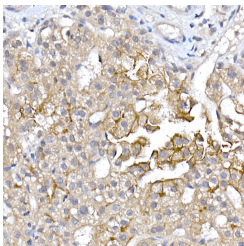


Western blot analysis of extracts of various cell lines, using AQP9 antibody (STJ111279) at 1:1000 dilution. Secondary antibody: HRP Goat Anti-rabbit IgG (H+L) at 1:10000 dilution. Lysates/proteins: 25µg per lane. Blocking buffer: 3% non-fat dry milk in TBST. Detection: ECL Basic Kit. Exposure time: 180s.

Immunofluorescence analysis of human liver using AQP9 Rabbit polyclonal antibody (STJ111279) at dilution of 1:200 (40x lens). Perform high pressure antigen retrieval with 10 mM citrate buffer pH 6. 0 before commencing with IF staining protocol. Secondary antibody: Cy3 Goat Anti-Rabbit IgG (H+L) at 1:500 dilution. Blue: DAPI for nuclear staining.



Immunohistochemistry of paraffin-embedded human liver cancer using AQP9 rabbit polyclonal antibody (STJ111279) at dilution of 1:150 (40x lens). Perform high pressure antigen retrieval with 10 mM citrate buffer pH 6. 0 before commencing with immunohistochemistry staining protocol.



Immunohistochemistry analysis of AQP9 in paraffin-embedded human liver cancer tissue using AQP9 Rabbit polyclonal antibody (STJ111279) at a dilution of 1:100 (40x lens). High pressure antigen retrieval was performed with 0. 01 M citrate buffer (pH 6. 0) prior to immunohistochemistry staining.

This product is suitable for in-vitro studies under the RESEARCH USE ONLY [RUO] licence. This product must not be used as for diagnostic or other medical purposes.
St John's Laboratory Ltd, Knowledge Dock Business Centre, University Way, London, E16 2RD | Tel: 0208 223 3081