

Anti-ACAN antibody (420-575) (STJ111277)

STJ111277

GENERAL INFORMATION

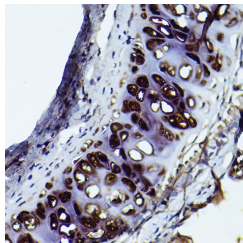
Product Type	Primary antibodies
Short Description	
Applications	WB/IHC-P/IF/ICC/ELISA
Host/Source	Rabbit
Reactivity	Human/Mouse/Rat

PRODUCT PROPERTIES

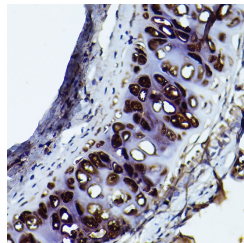
Clonality	Polyclonal
Clone ID	
Concentration	Lot specific
Conjugation	Unconjugated
Purification	Affinity purification
Dilution	WB:1:500-1:1000
Range	IHC-P:1:50-1:200 IF/ICC:1:50-1:200 ELISA:Recommended starting concentration is 1 µg/mL. Please optimize the concentration based on your specific assay requirements.
Formulation	PBS with 0.09% Sodium Azide, 50% Glycerol, pH 7.3.
Isotype	IgG
Storage	Store at -20°C for up to 1 year from the date of receipt, and avoid repeat freeze-thaw cycles.
Instruction	

TARGET INFORMATION

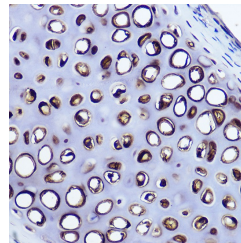
Gene ID	176
Gene Symbol	ACAN
Uniprot ID	PGCA_HUMAN
Immunogen	
Immunogen Region	420-575
Specificity	Recombinant fusion protein containing a sequence corresponding to amino acids 420-575 of human Aggrecan (NP_037359.3).
Immunogen Sequence	FAPEIGATAFAEVENETGEA TRPWGFPTPGLGPATAFTSE DLVQVTVAVPGQPHLPGGVV FHYRPGPTRYSLTFEEAQQACLRTGAVIASPEQLQAAYEA GYEQCDAGWLRDQTVRYPIV SPRTPCVGDKDSSPGVRYTG VRPSTETYDVYCFVDR



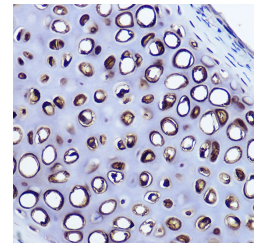
Immunohistochemistry of paraffin-embedded mouse cartilage using Aggrecan rabbit polyclonal antibody (STJ111277) at dilution of 1:100 (40x lens).



Immunohistochemistry analysis of paraffin-embedded Rat cartilage using Aggrecan Rabbit polyclonal antibody (STJ111277) at dilution of 1:50 (40x lens). Perform high pressure antigen retrieval with 10 mM citrate buffer pH 6.0 before commencing with immunohistochemistry staining protocol.



Immunohistochemistry of paraffin-embedded Rat cartilage using Aggrecan rabbit polyclonal antibody (STJ111277) at dilution of 1:100 (40x lens).



Immunohistochemistry analysis of paraffin-embedded Mouse cartilage using Aggrecan Rabbit polyclonal antibody (STJ111277) at dilution of 1:50 (40x lens). Perform high pressure antigen retrieval with 10 mM citrate buffer pH 6.0 before commencing with immunohistochemistry staining protocol.

This product is suitable for in-vitro studies under the RESEARCH USE ONLY [RUO] licence. This product must not be used as for diagnostic or other medical purposes.
St John's Laboratory Ltd, Knowledge Dock Business Centre, University Way, London, E16 2RD | Tel: 0208 223 3081