

Anti-CALCRL antibody (430-461) (STJ111275)

STJ111275

GENERAL INFORMATION

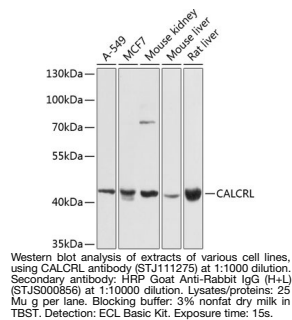
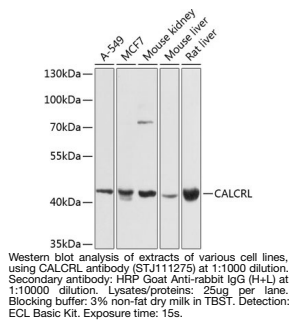
Product Type	Primary antibodies
Short Description	
Applications	WB/ELISA
Host/Source	Rabbit
Reactivity	Human/Mouse/Rat

PRODUCT PROPERTIES

Clonality	Polyclonal
Clone ID	
Concentration	Lot specific
Conjugation	Unconjugated
Purification	Affinity purification
Dilution Range	WB: 1:500-1:2000 ELISA: Recommended starting concentration is 1 µg/mL. Please optimize the concentration based on your specific assay requirements.
Formulation	PBS with 0.02% Sodium Azide, 50% Glycerol, pH 7.3.
Isotype	IgG
Storage Instruction	Store at -20°C for up to 1 year from the date of receipt, and avoid repeat freeze-thaw cycles.

TARGET INFORMATION

Gene ID	10203
Gene Symbol	CALCRL
Uniprot ID	CALRL_HUMAN
Immunogen	
Immunogen Region	430-461
Specificity	A synthetic peptide corresponding to a sequence within amino acids 346-445 of human CALCRL (NP_005786.1). GIEFVLIPWRPEGKIAEEVY DYIMHILMHFQGLLVSTIFC FFNGEVQAILRRNWNQYKIQ FGNSFSNSEALRSASYTVST
Immunogen Sequence	ISDGPGYSHDCPSEHLNGKS IHDIEVLLKPENLYN



This product is suitable for in-vitro studies under the RESEARCH USE ONLY [RUO] licence. This product must not be used as for diagnostic or other medical purposes.
St John's Laboratory Ltd, Knowledge Dock Business Centre, University Way, London, E16 2RD | Tel: 0208 223 3081