

Anti-METTL14 antibody (1-210) (STJ111272)

STJ111272

GENERAL INFORMATION

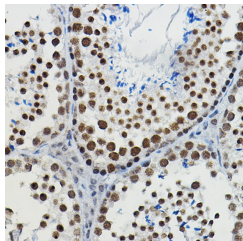
Product Type	Primary antibodies
Short Description	
Applications	WB/IHC-P/IF/ICC/ELISA
Host/Source	Rabbit
Reactivity	Human/Mouse/Rat

PRODUCT PROPERTIES

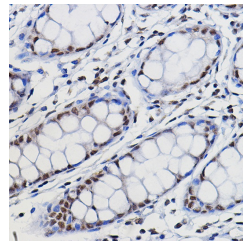
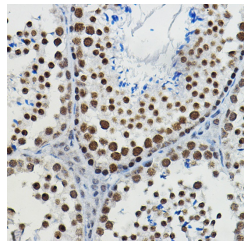
Clonality	Polyclonal
Clone ID	
Concentration	Lot specific
Conjugation	Unconjugated
Purification	Affinity purification
Dilution	WB:1:500-1:1000
Range	IHC-P:1:50-1:200
	ELISA:Recommended starting concentration is 1 μ g/mL. Please optimize the concentration based on your specific assay requirements.
Formulation	PBS with 0.09% Sodium Azide, 50% Glycerol, pH 7.3.
Isotype	IgG
Storage Instruction	Store at -20°C for up to 1 year from the date of receipt, and avoid repeat freeze-thaw cycles.

TARGET INFORMATION

Gene ID	57721
Gene Symbol	METTL14
Uniprot ID	MET14_HUMAN
Immunogen	
Immunogen Region	1-210
Specificity	Recombinant fusion protein containing a sequence corresponding to amino acids 1-210 of human METTL14 (NP_066012.1).
Immunogen Sequence	MDSRLQEIRERQKLRRQLLA QQLGAESADSIGAVLNSKDE QREIAETRETCRASYDTSAP NAKRKYLDEGETDEDKMEYY KDELEMQQDEENLPYEEIY KDSSTFLKGTQSLNPHNDYC QHFVDTGHRPQNFIQDVGLA DRFEEYPKLRILRLKDELI AKSNTPPMYLAQIEAFDIR ELTPKFDVILPEPPEEYYR ETGITANEKC



Western blot analysis of extracts of various cell lines, using METTL14 antibody (STJ111272) at 1:500 dilution. Secondary antibody: HRP Goat Anti-rabbit IgG (H+L) at 1:10000 dilution. Lysates/proteins: 25 μ g per lane. Blocking buffer: 3% non-fat dry milk in TBST. Detection: ECL Basic Kit. Exposure time: 5s.



Immunohistochemistry of paraffin-embedded mouse brain using METTL14 antibody (STJ111272) at dilution of 1:100 (40x lens). Perform high pressure antigen retrieval with 10 mM citrate buffer pH 6.0 before commencing with immunohistochemistry staining protocol.

