

Anti-NOX1 antibody (415-564) (STJ111270)

STJ111270

GENERAL INFORMATION

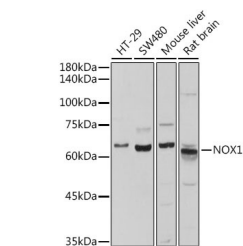
Product Type	Primary antibodies
Short Description	
Applications	WB/ELISA
Host/Source	Rabbit
Reactivity	Human/Mouse/Rat

PRODUCT PROPERTIES

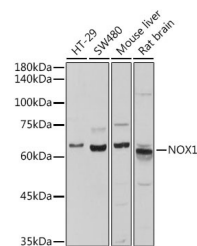
Clonality	Polyclonal
Clone ID	
Concentration	Lot specific
Conjugation	Unconjugated
Purification	Affinity purification
Dilution	WB:1:500-1:1000
Range	ELISA:Recommended starting concentration is 1 µg/mL. Please optimize the concentration based on your specific assay requirements.
Formulation	PBS with 0.02% Sodium Azide, 50% Glycerol, pH 7.3.
Isotype	IgG
Storage	Store at -20°C for up to 1 year from the date of receipt, and avoid repeat freeze-thaw cycles.
Instruction	

TARGET INFORMATION

Gene ID	27035
Gene Symbol	NOX1
Uniprot ID	NOX1_HUMAN
Immunogen	
Immunogen Region	415-564
Specificity	Recombinant fusion protein containing a sequence corresponding to amino acids 415-564 of human NOX1 (NP_008983.2).
Immunogen Sequence	KSIWYKFQCADHNLKTKKIY FYWICRETGAFSWFNLLTS LEQEMEELGKVGFLNYRLFL TGWDSNIVGHAALNFDKATD IVTGLKQKTSFGRPMWDNEF STIATSHPKSVVGVFLCGPR TLAKSLRKCCCHRYSSLDPRK VQFYFNKENF



Western blot analysis of extracts of various cell lines, using NOX1 antibody (STJ111270) at 1:500 dilution. Secondary antibody: HRP Goat Anti-rabbit IgG (H+L) at 1:10000 dilution. Lysates/proteins: 25µg per lane. Blocking buffer: 3% non-fat dry milk in TBST. Detection: ECL Basic Kit. Exposure time: 10s.



Western blot analysis of extracts of various cell lines, using NOX1 antibody (STJ111270) at 1:500 dilution. Secondary antibody: HRP Goat Anti-Rabbit IgG (H+L) (STJ5000856) at 1:10000 dilution. Lysates/proteins: 25 µg per lane. Blocking buffer: 3% nonfat dry milk in TBST. Detection: ECL Basic Kit. Exposure time: 10s.

This product is suitable for in-vitro studies under the RESEARCH USE ONLY [RUO] licence. This product must not be used as for diagnostic or other medical purposes.
St John's Laboratory Ltd, Knowledge Dock Business Centre, University Way, London, E16 2RD | Tel: 0208 223 3081