

Anti-NKX3-2 antibody (1-180) (STJ111268)

STJ111268

GENERAL INFORMATION

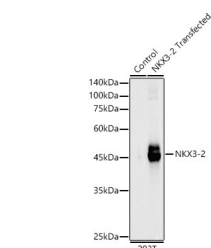
Product Type	Primary antibodies
Short Description	
Applications	WB/ELISA
Host/Source	Rabbit
Reactivity	Human/Mouse/Rat

PRODUCT PROPERTIES

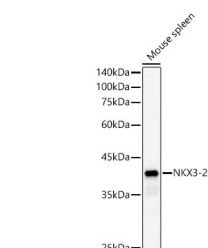
Clonality	Polyclonal
Clone ID	
Concentration	Lot specific
Conjugation	Unconjugated
Purification	Affinity purification
Dilution	WB: 1:100-1:500
Range	ELISA: Recommended starting concentration is 1 µg/mL. Please optimize the concentration based on your specific assay requirements.
Formulation	PBS with 0.05% Proclin300, 50% Glycerol, pH 7.3.
Isotype	IgG
Storage	Store at -20°C for up to 1 year from the date of receipt, and avoid repeat freeze-thaw cycles.
Instruction	

TARGET INFORMATION

Gene ID	579
Gene Symbol	NKX3-2
Uniprot ID	NKX32_HUMAN
Immunogen	
Immunogen Region	1-180
Specificity	Recombinant fusion protein containing a sequence corresponding to amino acids 1-180 of human NKX3-2 (NP_001180.1).
Immunogen Sequence	MAVRGANTLTFSIQAILNK KEERGGLAAPEGRPAPGGTA ASVAAAPAVCCWRLFGERDA GALGGAEDSLLASPAGTRTA AGRTAESPEGWSDSALSEE NESRRRCADARGASGAGLAG GSLSLGQPVCELAASKDLEE EAAGRSDSEMSASVSGDRSP RTEDDVGPRGAHVSAALCSG



Western blot analysis of 293T-NKX3-2, using NKX3-2 antibody (STJ111268) at 1:500 dilution. Secondary antibody: HRP Goat Anti-rabbit IgG (H+L) (STJ5000856) at 1:10000 dilution. Lysates/proteins: 25 µg per lane. Blocking buffer: 3% non-fat dry milk in TBST. Detection: ECL Basic Kit. Exposure time: 30s.



Western blot analysis of mouse spleen, using NKX3-2 antibody (STJ111268) at 1:500 dilution. Secondary antibody: HRP Goat Anti-rabbit IgG (H+L) (STJ5000856) at 1:10000 dilution. Lysates/proteins: 25 µg per lane. Blocking buffer: 3% non-fat dry milk in TBST. Detection: ECL Basic Kit. Exposure time: 180s.

This product is suitable for in-vitro studies under the RESEARCH USE ONLY [RUO] licence. This product must not be used as for diagnostic or other medical purposes.
St John's Laboratory Ltd, Knowledge Dock Business Centre, University Way, London, E16 2RD | Tel: 0208 223 3081