

Anti-SLC8A1 antibody (600-700) (STJ111250)

STJ111250

GENERAL INFORMATION

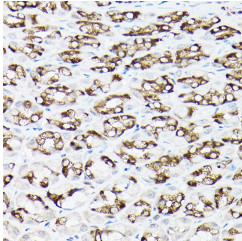
Product Type	Primary antibodies
Short Description	
Applications	WB/IHC-P/ELISA
Host/Source	Rabbit
Reactivity	Human/Mouse/Rat

PRODUCT PROPERTIES

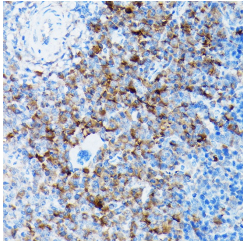
Clonality	Polyclonal
Clone ID	
Concentration	Lot specific
Conjugation	Unconjugated
Purification	Affinity purification
Dilution Range	WB:1:2000-1:6000 IHC-P:1:50-1:200 ELISA:Recommended starting concentration is 1 Mu g/mL. Please optimize the concentration based on your specific assay requirements.
Formulation	PBS with 0.01% Thimerosal, 50% Glycerol, pH 7.3.
Isotype	IgG
Storage Instruction	Store at -20°C for up to 1 year from the date of receipt, and avoid repeat freeze-thaw cycles.

TARGET INFORMATION

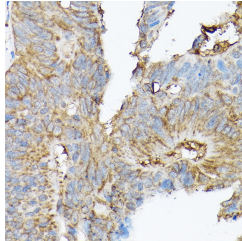
Gene ID	6546
Gene Symbol	SLC8A1
Uniprot ID	NAC1_HUMAN
Immunogen	
Immunogen Region	600-700
Specificity	Recombinant fusion protein containing a sequence corresponding to amino acids 600-700 of human SLC8A1 (NP_066920.1).
Immunogen Sequence	DEIVKTISVKVIDDEEYEKN KTFEIGEPEPLVEMSEKKA LLLNELGGFTITGKYLFGQP VFRKVVHAREHPILSTVITIA DEYDDKQPLTSKEEEERRIA E



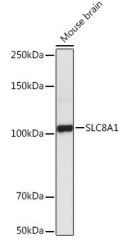
Immunohistochemistry analysis of SLC8A1 in paraffin-embedded rat stomach using SLC8A1 Rabbit polyclonal antibody (STJ111250) at dilution of 1:100 (40x lens). Perform high pressure antigen retrieval with 10 mM citrate buffer pH 6.0 before commencing with immunohistochemistry staining protocol.



Immunohistochemistry analysis of SLC8A1 in paraffin-embedded mouse spleen using SLC8A1 Rabbit polyclonal antibody (STJ111250) at dilution of 1:100 (40x lens). Perform high pressure antigen retrieval with 10 mM citrate buffer pH 6.0 before commencing with immunohistochemistry staining protocol.



Immunohistochemistry analysis of SLC8A1 in paraffin-embedded human colon carcinoma using SLC8A1 Rabbit polyclonal antibody (STJ111250) at dilution of 1:100 (40x lens). Perform high pressure antigen retrieval with 10 mM citrate buffer pH 6.0 before commencing with immunohistochemistry staining protocol.



Western blot analysis of lysates from Mouse brain, using SLC8A1 Rabbit polyclonal antibody (STJ111250) at 1:5000 dilution. Secondary antibody: HRP Goat Anti-Rabbit IgG (H+L) (STJ5000856) at 1:10000 dilution. Lysates/proteins: 25 Mu g per lane. Blocking buffer: 3% nonfat dry milk in TBST. Detection: ECL Basic Kit. Exposure time: 60s.

This product is suitable for in-vitro studies under the RESEARCH USE ONLY [RUO] licence. This product must not be used as for diagnostic or other medical purposes.
St John's Laboratory Ltd, Knowledge Dock Business Centre, University Way, London, E16 2RD | Tel: 0208 223 3081