

Anti-MSI1 antibody (200-362) (STJ111162)

STJ111162

GENERAL INFORMATION

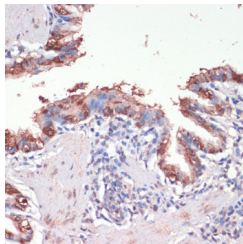
Product Type	Primary antibodies
Short Description	
Applications	WB/IHC-P/ELISA
Host/Source	Rabbit
Reactivity	Human/Mouse/Rat

PRODUCT PROPERTIES

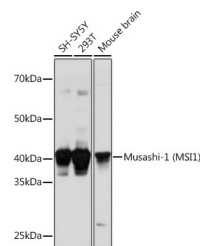
Clonality	Polyclonal
Clone ID	
Concentration	Lot specific
Conjugation	Unconjugated
Purification	Affinity purification
Dilution	WB:1:500-1:1000
Range	IHC-P:1:50-1:100
	ELISA:Recommended starting concentration is 1 μ g/mL. Please optimize the concentration based on your specific assay requirements.
Formulation	PBS with 0.09% Sodium Azide, 50% Glycerol, pH 7.3.
Isotype	IgG
Storage Instruction	Store at -20°C for up to 1 year from the date of receipt, and avoid repeat freeze-thaw cycles.

TARGET INFORMATION

Gene ID	4440
Gene Symbol	MSI1
Uniprot ID	MSI1_HUMAN
Immunogen	
Immunogen Region	200-362
Specificity	Recombinant fusion protein containing a sequence corresponding to amino acids 200-362 of human Musashi-1 (MSI1) (NP_002433.1).
Immunogen Sequence	SRVMPYGMDAFMLGIGMLGY PGFQATTYASRSYTGAPGY TYQFPEFRVERTPLPSAPVL PELTAIPLTAYGPMAAAAAA AAVVRGTGSHPWMTMAPPPGS TPSRTGGFLGTTSPGPMAEL YGAANQDSGVSSYISAASPA PSTGFGHSLGGPLIATAFTN GYH



Immunohistochemistry analysis of paraffin-embedded rat lung using Musashi-1 (Musashi-1 (MSI1)) antibody (STJ111162) at dilution of 1:200 (40x lens). Perform microwave antigen retrieval with 10 mM PBS buffer pH 7.2 before commencing with immunohistochemistry staining protocol.



Western blot analysis of extracts of various cell lines, using Musashi-1 (Musashi-1 (MSI1)) Polyclonal Antibody (STJ111162) at 1:1000 dilution. Secondary antibody: HRP Goat Anti-Rabbit IgG (H+L) (STJS000856) at 1:10000 dilution. Lysates/proteins: 25 μ g per lane. Blocking buffer: 3% nonfat dry milk in TBST. Detection: ECL Basic Kit. Exposure time: 30s.

This product is suitable for in-vitro studies under the RESEARCH USE ONLY [RUO] licence. This product must not be used as for diagnostic or other medical purposes.
St John's Laboratory Ltd, Knowledge Dock Business Centre, University Way, London, E16 2RD | Tel: 0208 223 3081