

Anti-CHD3 antibody (1900-2000) (STJ111133)

STJ111133

GENERAL INFORMATION

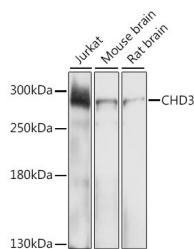
Product Type	Primary antibodies
Short Description	
Applications	WB/ELISA
Host/Source	Rabbit
Reactivity	Human/Mouse/Rat

PRODUCT PROPERTIES

Clonality	Polyclonal
Clone ID	
Concentration	Lot specific
Conjugation	Unconjugated
Purification	Affinity purification
Dilution Range	WB:1:200-1:1000 ELISA:Recommended starting concentration is 1 Mu g/mL. Please optimize the concentration based on your specific assay requirements.
Formulation	PBS with 0.02% Sodium Azide, 50% Glycerol, pH 7.3.
Isotype	IgG
Storage	Store at -20°C for up to 1 year from the date of receipt, and avoid repeat freeze-thaw cycles.
Instruction	

TARGET INFORMATION

Gene ID	1107
Gene Symbol	CHD3
Uniprot ID	CHD3_HUMAN
Immunogen	
Immunogen Region	1900-2000
Specificity	A synthetic peptide corresponding to a sequence within amino acids 1900-2000 of human CHD3 (NP_001005273.1).
Immunogen Sequence	ERSILSRLASKGTEPHPTPA YPPGPYATPPGYGAAFSAAP VGALAAAGANYSQMPAGSFI TAATNGPPVLVKKEKEMVGA LVSDGLDRKEPRAGEVICID D



Western blot analysis of extracts of various cell lines, using CHD3 antibody (STJ111133) at 1:1000 dilution. Secondary antibody: HRP Goat Anti-Rabbit IgG (H+L) (STJS000856) at 1:10000 dilution. Lysates/proteins: 25 Mu g per lane. Blocking buffer: 3% nonfat dry milk in TBST. Detection: ECL Enhanced Kit. Exposure time: 30s.