

Anti-LAMC2 antibody (746-860) (STJ111117)
STJ111117

GENERAL INFORMATION

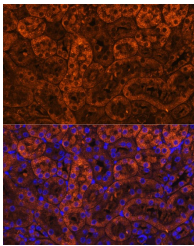
Product Type	Primary antibodies
Short Description	
Applications	WB/IF/ICC/ELISA
Host/Source	Rabbit
Reactivity	Human/Mouse/Rat

PRODUCT PROPERTIES

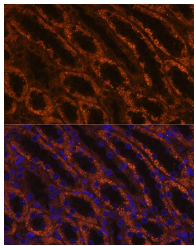
Clonality	Polyclonal
Clone ID	
Concentration	Lot specific
Conjugation	Unconjugated
Purification	Affinity purification
Dilution Range	WB:1:1000-1:5000 IF/ICC:1:50-1:100 ELISA:Recommended starting concentration is 1 µg/mL. Please optimize the concentration based on your specific assay requirements.
Formulation	PBS with 0.02% Sodium Azide, 50% Glycerol, pH 7.3.
Isotype	IgG
Storage Instruction	Store at -20°C for up to 1 year from the date of receipt, and avoid repeat freeze-thaw cycles.

TARGET INFORMATION

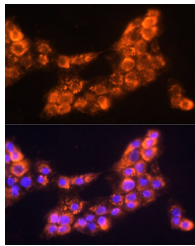
Gene ID	3918
Gene Symbol	LAMC2
Uniprot ID	LAMC2_HUMAN
Immunogen	
Immunogen Region	746-860
Specificity	Recombinant fusion protein containing a sequence corresponding to amino acids 746-860 of human LAMC2 (NP_005553.2).
Immunogen Sequence	DHYVGPNGFKSLAQEATRLA ESHVESASNMEQLTRETEY SKQALSLVRKALHEGVGSGS GSPDGAUVQGLVEKLEKTKS LAQLLTREATQAEIADRSY QHSLRLLLDSVSRLLQ



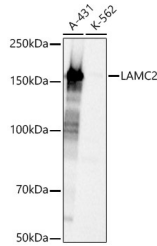
Immunofluorescence analysis of paraffin-embedded mouse kidney using LAMC2 Rabbit polyclonal antibody (STJ111117) at dilution of 1:100 (40x lens). Secondary antibody: Cy3 Goat Anti-Rabbit IgG (H+L) at 1:500 dilution. Blue: DAPI for nuclear staining.



Immunofluorescence analysis of paraffin-embedded rat kidney using LAMC2 Rabbit polyclonal antibody (STJ111117) at dilution of 1:100 (40x lens). Secondary antibody: Cy3 Goat Anti-Rabbit IgG (H+L) at 1:500 dilution. Blue: DAPI for nuclear staining.



Immunofluorescence analysis of A431 cells using LAMC2 Rabbit polyclonal antibody (STJ111117) at dilution of 1:100 (40x lens). Secondary antibody: Cy3 Goat Anti-Rabbit IgG (H+L) at 1:500 dilution. Blue: DAPI for nuclear staining.



Western blot analysis of various lysates, using LAMC2 Rabbit polyclonal antibody (STJ111117) at 1:3000 dilution. Secondary antibody: HRP Goat Anti-Rabbit IgG (H+L) (STJS000856) at 1:10000 dilution. Lysates/proteins: 25 µg per lane. Blocking buffer: 3% nonfat dry milk in TBST. Detection: ECL Basic Kit. Exposure time: 1s.

This product is suitable for in-vitro studies under the RESEARCH USE ONLY [RUO] licence. This product must not be used as for diagnostic or other medical purposes.
St John's Laboratory Ltd, Knowledge Dock Business Centre, University Way, London, E16 2RD | Tel: 0208 223 3081