

Anti-RUNX1T1 antibody (250-403) (STJ111109)

STJ111109

GENERAL INFORMATION

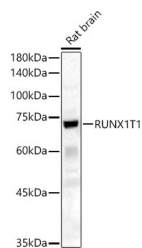
Product Type	Primary antibodies
Short Description	
Applications	WB/ELISA
Host/Source	Rabbit
Reactivity	Rat

PRODUCT PROPERTIES

Clonality	Polyclonal
Clone ID	
Concentration	Lot specific
Conjugation	Unconjugated
Purification	Affinity purification
Dilution	WB:1:500-1:1000
Range	ELISA:Recommended starting concentration is 1 Mu g/mL. Please optimize the concentration based on your specific assay requirements.
Formulation	PBS with 0.02% Sodium Azide, 50% Glycerol, pH 7.3.
Isotype	IgG
Storage	Store at -20°C for up to 1 year from the date of receipt, and avoid repeat freeze-thaw cycles.
Instruction	

TARGET INFORMATION

Gene ID	862
Gene Symbol	RUNX1T1
Uniprot ID	MTG8_HUMAN
Immunogen	
Immunogen Region	250-403
Specificity	Recombinant fusion protein containing a sequence corresponding to amino acids 250-403 of human RUNX1T1 (NP_783552.1).
Immunogen Sequence	ENGFDREPLHSEHPKRPCT ISPGQRYSPNNGLSYQPNGL PHPTPPPPQHRYRLDDMAIAH HYRDSYRHPSHRDLRDRNRP MGLHGTRQEEMIDHRLTDRE WAEWKHLDHLLNCIMDMVE KTRRSLTVLRRCQEAADREEL NYWIRRYSDAEDLK



Western blot analysis of Rat brain, using RUNX1T1 antibody (STJ111109) at 1:500 dilution. Secondary antibody: HRP Goat Anti-Rabbit IgG (H+L) (STJ5000856) at 1:10000 dilution. Lysates/proteins: 25 Mu g per lane. Blocking buffer: 3% nonfat dry milk in TBST. Detection: ECL Basic Kit. Exposure time: 60s.

This product is suitable for in-vitro studies under the RESEARCH USE ONLY [RUO] licence. This product must not be used as for diagnostic or other medical purposes.
St John's Laboratory Ltd, Knowledge Dock Business Centre, University Way, London, E16 2RD | Tel: 0208 223 3081